

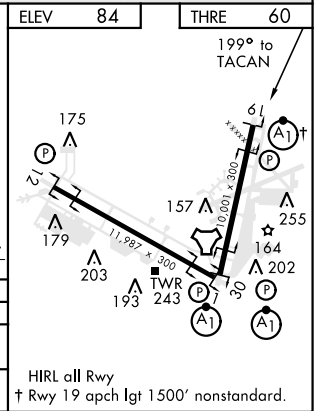
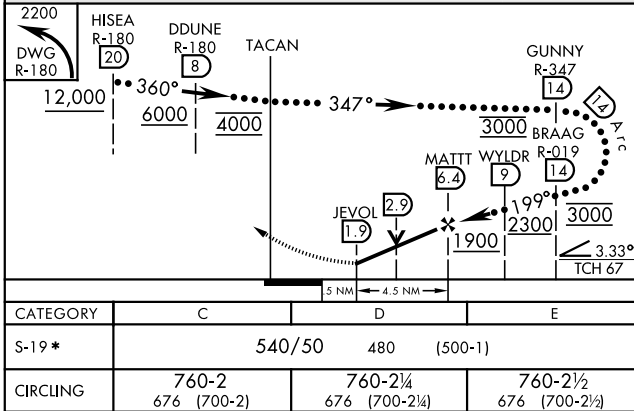
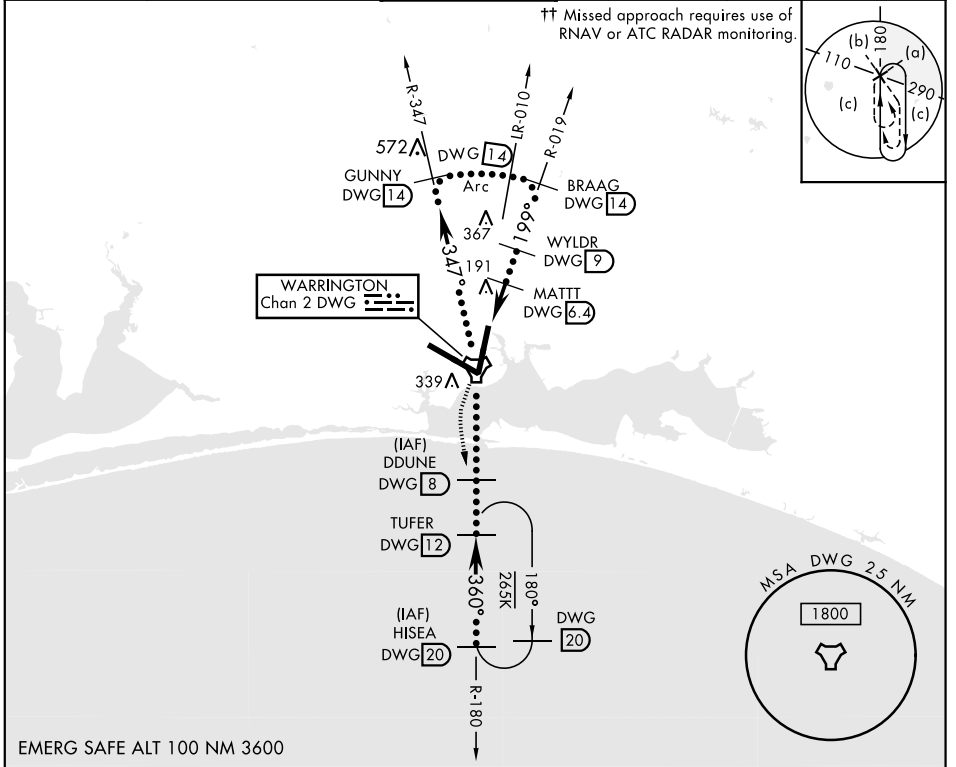
HI-TACAN RWY 19

TACAN DWG Chan 2	APCH CRS 199°	Rwy ldg THRE 60 Arprt Elev 84
---------------------	------------------	-------------------------------------

JAL-436 [USAF] EGLIN AFB/DESTIN-FT WALTON BEACH (KVPS)

* When ALS inop, increase CAT CDE vis to 1 3/8 miles.  †† MISSED APPROACH: Climbing left turn to 2200 direct TUFER DWG R-180/12 DME and hold.

ATIS ★ 134.625 273.5	EGLIN APP CON 125.1 281.45 271°-089° 132.1 360.6 090°-270°	EGLIN TOWER 118.2 353.65	GND CON 121.8 335.8	CLNC DEL 127.7 377.2
-------------------------	--	-----------------------------	------------------------	-------------------------



VALPARAISO, FLORIDA 30° 29' N-86° 32' W EGLIN AFB/DESTIN-FT WALTON BEACH (KVPS)

Amdt 2 27JUN13

HI-TACAN RWY 19

SE-3, 25 FEB 2021 to 25 MAR 2021

SE-3, 25 FEB 2021 to 25 MAR 2021