

VALPARAISO, FLORIDA

ILS W or LOC W RWY 19

LOC/DME I-CAH 109.1 Chan 28	APCH CRS 192°	Rwy Idg 10,001 THRE 60 Arprt Elev 84
---	-------------------------	---

AL-436 [USAF]

EGLIN AFB/DESTIN-FT WALTON BEACH (KVPS)

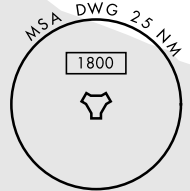
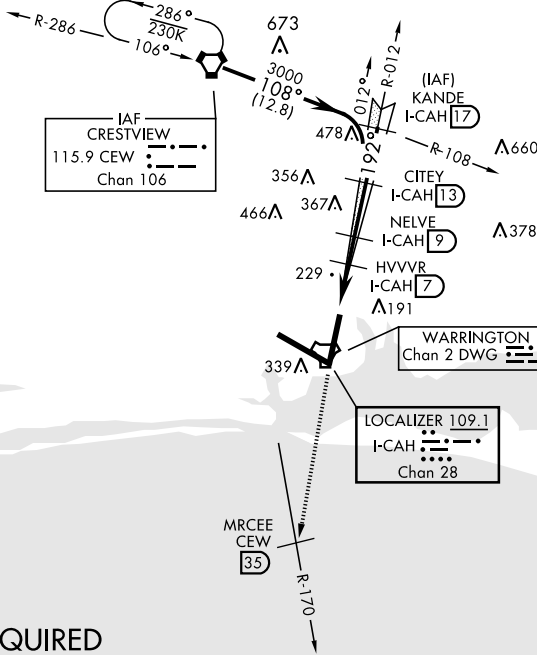
* When ALS inop, increase CAT ABCDE RVR to 40 and vis to 3/4 mile.
 ** When ALS inop, increase CAT AB RVR to 55 and vis to 1 mile, CAT CDE RVR to 60 and vis to 1 1/8 miles.



MISSED APPROACH: Climb straight ahead to 3000 to CEW R-170/35 DME (MRCEE), then as directed by ATC.

ATIS * 134.625 273.5	EGLIN APP CON 125.1 281.45 271°-089° 132.1 360.6 090°-270°	EGLIN TOWER 118.2 353.65	GND CON 121.8 335.8	CLNC DEL 127.7 377.2
--------------------------------	--	------------------------------------	-------------------------------	--------------------------------

Procedure not usable at times due to restricted area activity.



RADAR REQUIRED
DME REQUIRED
 (for Localizer Approach)

EMERG SAFE ALT 100 NM 3600

ELEV 84	THRE 60	3000					
CATEGORY	A	B	C	D	E		
S-ILS 19*	260/24		200	(200-1/2)			
S-LOC 19**	480/24	420 (400-1/2)	480/40	420	(400-3/4)		
CIRCLING	660-1	576 (600-1)	760-2 676 (700-2)	760-2 1/4 676 (700-2 1/4)	760-2 1/2 676 (700-2 1/2)		

VALPARAISO, FLORIDA

30°29'N-86°32'W

EGLIN AFB/DESTIN-FT WALTON BEACH (KVPS)

Amdt 5 17OCT13

ILS W or LOC W RWY 19

SE-3, 25 FEB 2021 to 25 MAR 2021

SE-3, 25 FEB 2021 to 25 MAR 2021