

# ILS X or LOC X RWY 19

LOC I-CAH <b>109.1</b>	APCH CRS <b>192°</b>	Rwy Ldg THRE <b>10,001</b> 60 84
---------------------------	-------------------------	---

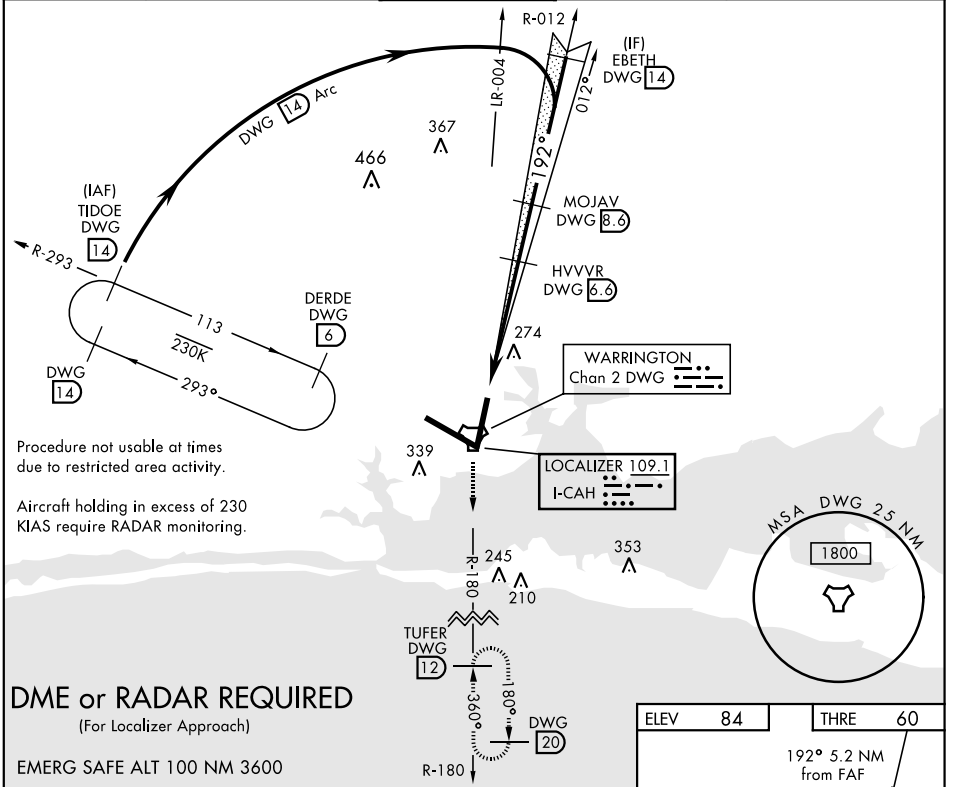
AL-436 [USAF] EGLIN AFB/DESTIN-FT WALTON BEACH (KVPS)

\* When ALS inop, increase CAT ABCDE RVR to 40 and vis to 3/4 mile.  
 \*\* When ALS inop, increase CAT AB RVR to 55 and vis 1 mile, CAT CDE RVR to 60 and vis to 1 1/8 miles.



MISSED APPROACH: Climb to 2200 on DWG R-180 to 12 DME/TUFER and hold.

ATIS * <b>134.625 273.5</b>	EGLIN APP CON <b>125.1 281.45 271°-089°</b> <b>132.1 360.6 090°-270°</b>	EGLIN TOWER <b>118.2 353.65</b>	GND CON <b>121.8 335.8</b>	CLNC DEL <b>127.7 377.2</b>
--------------------------------	--	------------------------------------	-------------------------------	--------------------------------

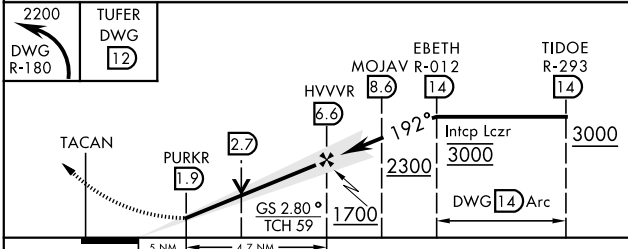


Procedure not usable at times due to restricted area activity.

Aircraft holding in excess of 230 KIAS require RADAR monitoring.

**DME or RADAR REQUIRED**  
(For Localizer Approach)

EMERG SAFE ALT 100 NM 3600



ELEV 84	THRE 60
---------	---------

192° 5.2 NM from FAF

HIRL all Rwy  
 † Rwy 19 apch lgt 1500' nonstandard.

LOC FAF to MAP 4.7 NM					
Knots	60	90	120	150	180
Min:Sec	4:42	3:08	2:21	1:53	1:34

CATEGORY	A	B	C	D	E
S-ILS 19 *	260/24		200	(200-1/2)	
S-LOC 19 **	480/24	420 (400-1/2)	480/40	420 (400-3/4)	
CIRCLING	660-1	576 (600-1)	760-2	760-2 1/4	760-2 1/2
			676 (700-2)	676 (700-2 1/4)	676 (700-2 1/2)

# ILS X or LOC X RWY 19

SE-3, 25 FEB 2021 to 25 MAR 2021

SE-3, 25 FEB 2021 to 25 MAR 2021