

VALPARAISO, FLORIDA

RNAV (GPS) RWY 1

APCH CRS	Rwy ldg	10,001
012°	THRE	48
	Arpt Elev	84

AL-436 [USAF] EGLIN AFB/DESTIN-FT WALTON BEACH (KVPS)

* When ALS inop, increase CAT AB RVR to 55 and vis to 1 mile, CAT CDE vis to 1 3/8 miles.

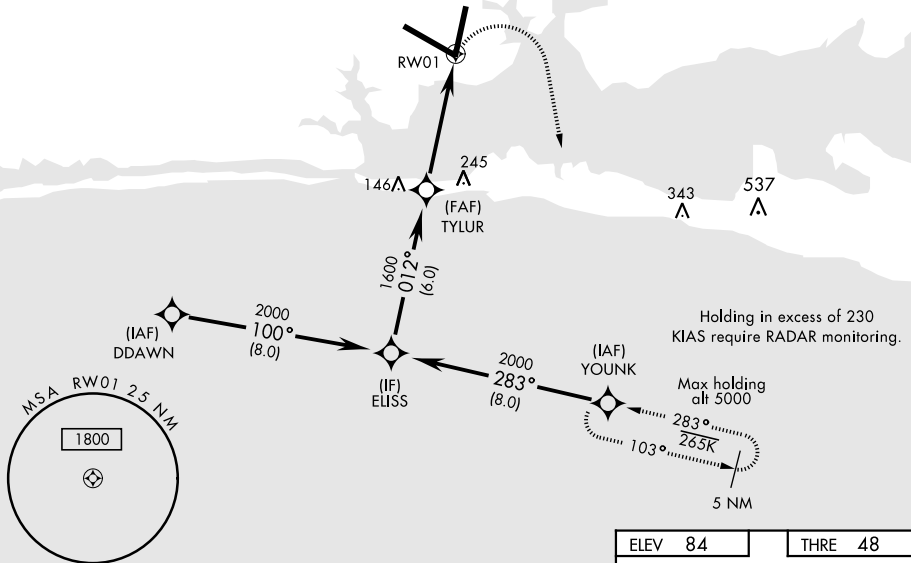


MISSED APPROACH: Climbing right turn to 2000 to YOUNK and hold.

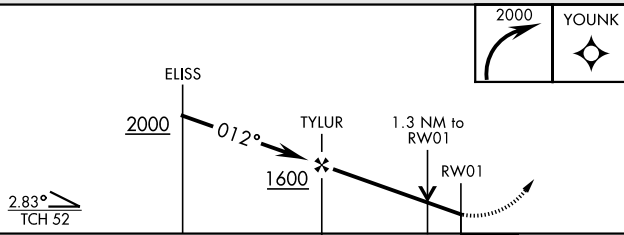
ATIS ★	EGLIN APP CON	EGLIN TOWER	GND CON	CLNC DEL
134.625 273.5	125.1 281.45 271°-089° 132.1 360.6 090°-270°	118.2 353.65	121.8 335.8	127.7 377.2

DME/DME RNP-0.3 NA

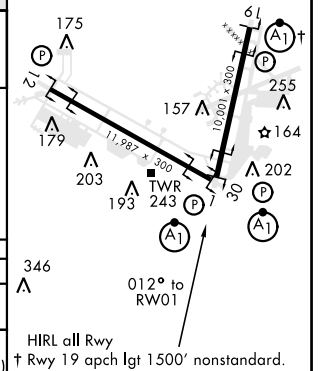
Procedure not usable at times due to restricted area activity.



EMERG SAFE ALT 100 NM 3600



ELEV 84	THRE 48
---------	---------



HIRL all Rwy
† Rwy 19 apch lgt 1500' nonstandard.

VALPARAISO, FLORIDA

30°29'N-86°32'W

EGLIN AFB/DESTIN-FT WALTON BEACH (KVPS)

Amdt 1 30MAY13

RNAV (GPS) RWY 1

SE-3, 25 FEB 2021 to 25 MAR 2021

SE-3, 25 FEB 2021 to 25 MAR 2021