

VALPARAISO, FLORIDA

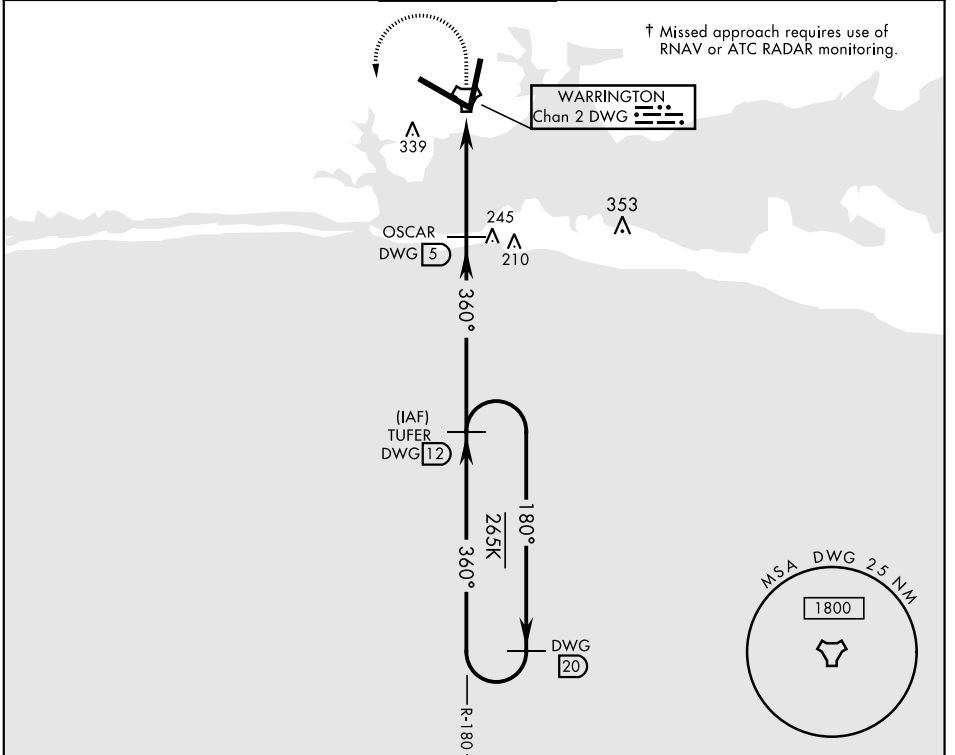
# TACAN RWY 1

TACAN DWG Chan <b>2</b>	APCH CRS <b>360°</b>	Rwy ldg <b>10,001</b> THRE <b>48</b> Arprt Elev <b>84</b>	AL-436 [USAF]	EGLIN AFB/DESTIN-FT WALTON BEACH (KVPS)
----------------------------	-------------------------	---	---------------	---

\* When ALS inop, increase CAT AB RVR to 55, vis to 1 mile, CAT CDE vis to 1½ miles.

† MISSED APPROACH: Climb to 800 then climbing left turn to 2200 direct TUFER DWG R-180/12 DME and hold.

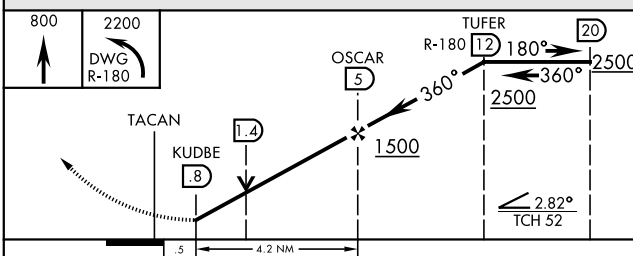
ATIS * <b>134.625 273.5</b>	EGLIN APP CON <b>125.1 281.45 271° · 089°</b> <b>132.1 360.6 090° · 270°</b>	EGLIN TOWER <b>118.2 353.65</b>	GND CON <b>121.8 335.8</b>	CLNC DEL <b>127.7 377.2</b>
--------------------------------	--	------------------------------------	-------------------------------	--------------------------------



SE-3, 25 FEB 2021 to 25 MAR 2021

SE-3, 25 FEB 2021 to 25 MAR 2021

EMERG SAFE ALT 100 NM 3600



ELEV 84	THRE 48
---------	---------

HIRL all Rwy  
†† Rwy 19 apch lgt  
1500' nonstandard.

CATEGORY	A	B	C	D	E
S-1 *	540/24 492 (500-½)		540/50 492 (500-1)		
CIRCLING	660-1 576 (600-1)		760-2 676 (700-2)	760-2¼ 676 (700-2¼)	760-2½ 676 (700-2½)

VALPARAISO, FLORIDA  
Amdt 1 26MAY16

30°29'N-86°32'W

EGLIN AFB/DESTIN-FT WALTON BEACH (KVPS)

# TACAN RWY 1