

VALPARAISO, FLORIDA

TACAN RWY 19

TACAN DWG Chan 2	APCH CRS 199°	Rwy Ldg 10,001
		THRE 60
		Arprt Elev 84

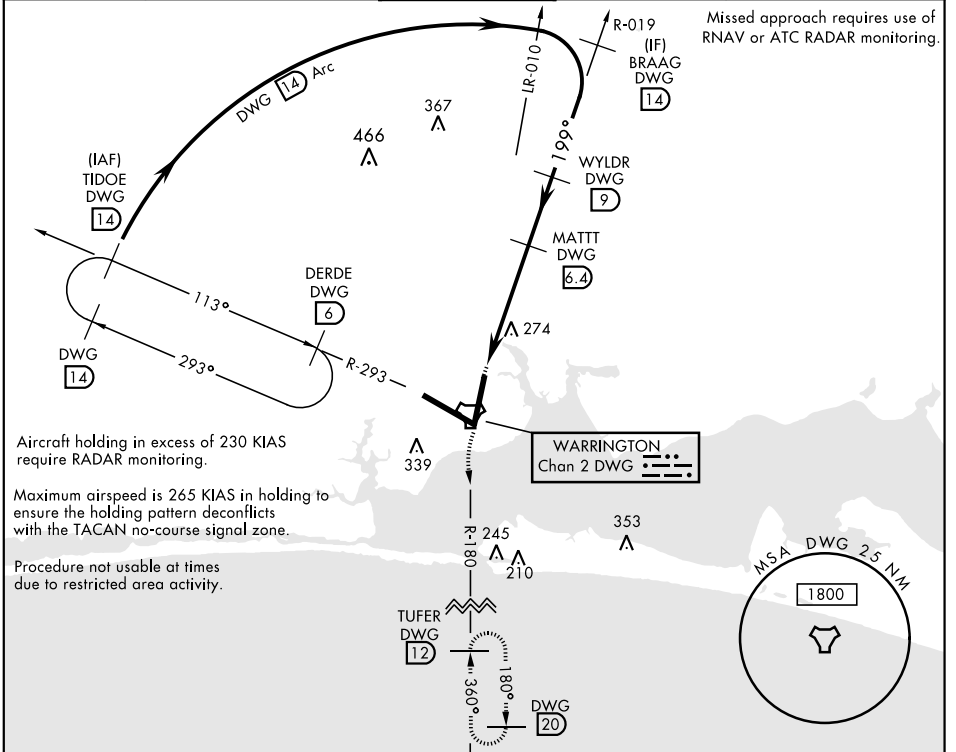
AL-436 [USAF] EGLIN AFB/DESTIN-FT WALTON BEACH (KVPS)

* When ALS inop, increase CAT AB RVR to 55 and vis to 1 mile, CAT CDE vis to 1 3/8 miles.

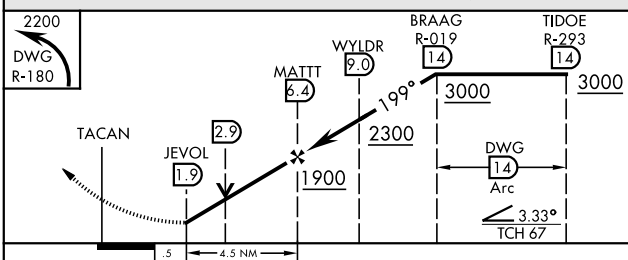
ALSF-1

MISSED APPROACH: Climbing left turn to 2200 TUFER DWG TACAN R-180/12 DME and hold.

ATIS ★ 134.625 273.5	EGLIN APP CON 125.1 281.45 271°-089° 132.1 360.6 090°-270°	EGLIN TOWER 118.2 353.65	GND CON 121.8 335.8	CLNC DEL 127.7 377.2
--------------------------------	--	------------------------------------	-------------------------------	--------------------------------



EMERG SAFE ALT 100 NM 3600



ELEV 84	THRE 60
---------	---------

HIRL all Rwy
† Rwy 19 apch lgt 1500' nonstandard.

CATEGORY	A	B	C	D	E
S-19 *	540/24 480 (500-1/2)		540/50 480 (500-1)		
CIRCLING	660-1 576 (600-1)		760-2 676 (700-2)	760-2 1/4 676 (700-2 1/4)	760-2 1/2 676 (700-2 1/2)

VALPARAISO, FLORIDA
Amdt 2 27JUN13

30°29'N-86°32'W

EGLIN AFB/DESTIN-FT WALTON BEACH (KVPS)

TACAN RWY 19

SE-3, 25 FEB 2021 to 25 MAR 2021

SE-3, 25 FEB 2021 to 25 MAR 2021