

TACAN RWY 30

TACAN DWG Chan 2	APCH CRS 313°	Rwy Idg 11,987 THRE 49 Arprt Elev 84
---------------------	------------------	--

AL-436 [USAF]

EGLIN AFB/DESTIN-FT WALTON BEACH (KVPS)

* When ALS inop, increase CAT AB RVR to 55 and vis to 1 mile, CAT CDE vis to 1½ miles.

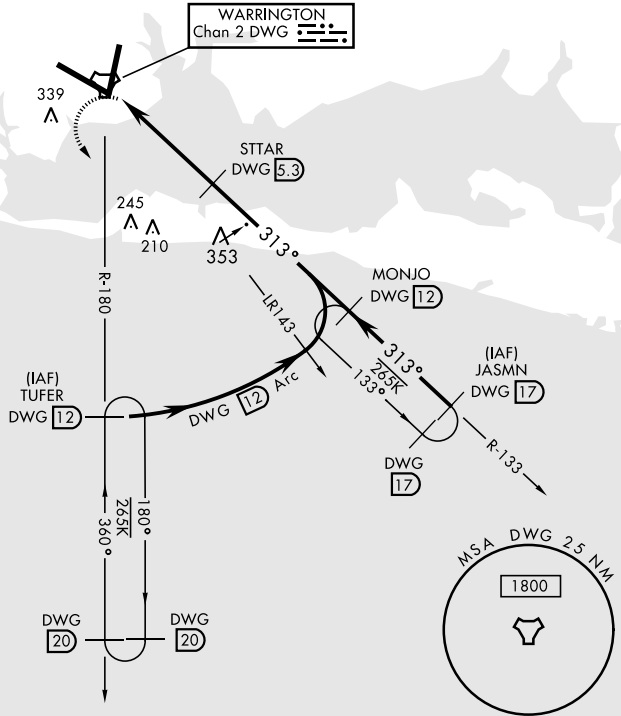


MISSED APPROACH: Climbing left turn to 2200 direct TUFER DWG R-180/12 DME and hold.

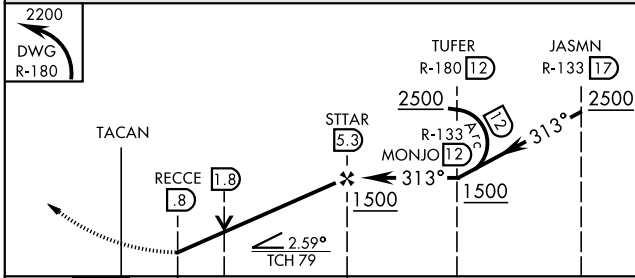
ATIS* 134.625 273.5	EGLIN APP CON 125.1 281.45 271°-089° 132.1 360.6 090°-270°	EGLIN TOWER 118.2 353.65	GND CON 121.8 335.8	CLNC DEL 127.7 377.2
------------------------	--	-----------------------------	------------------------	-------------------------

Procedure not usable at times due to restricted area activity.

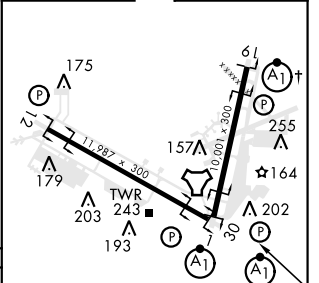
Aircraft holding in excess of 230 KIAS require radar monitoring.



EMERG SAFE ALT 100 NM 3600



ELEV 84	THRE 49
---------	---------



CATEGORY	A	B	C	D	E
S-30 *	520/24 471 (500-½)		520/50 471 (500-1)		
CIRCLING	660-1 576 (600-1)		760-2 676 (700-2)	760-2¼ 676 (700-2¼)	760-2½ 676 (700-2½)

HIRL all Rwy
† Rwy 19 apch lgt 1500' nonstandard.

TACAN RWY 30

SE-3, 25 FEB 2021 to 25 MAR 2021

SE-3, 25 FEB 2021 to 25 MAR 2021