

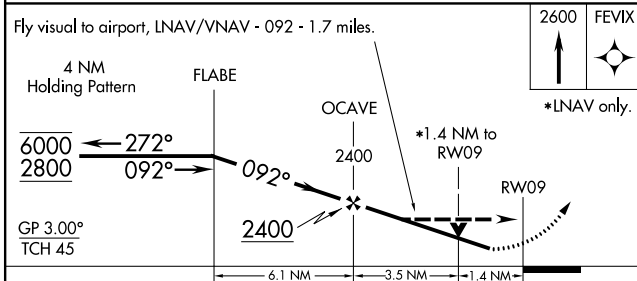
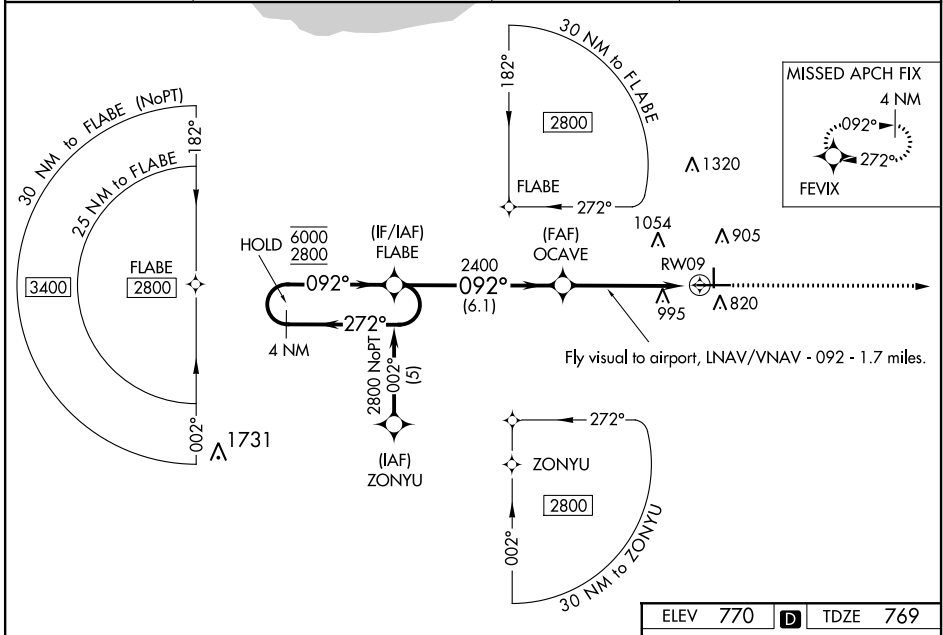
WAAS CH 42606 W09A	APP CRS 092°	Rwy Idg TDZE Apt Elev	6500 769 770
--	------------------------	-----------------------------	---

RNAV (GPS) RWY 9

PORTER COUNTY RGNL (VPZ)

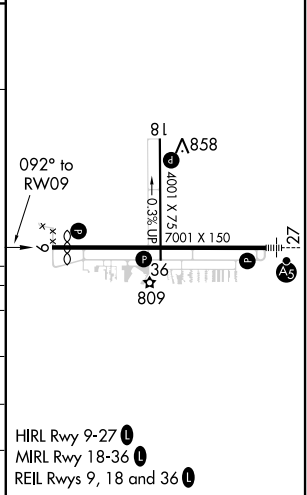
RNP APCH. 	Rwy 9 helicopter visibility reduction below 3/4 SM NA. For uncompensated Baro-VNAV systems, LNAV/VNAV NA below -16°C or above 47°C.	MISSED APPROACH: Climb to 2600 direct FEVIX and hold.
---------------	---	--

ASOS 125.875	SOUTH BEND APP CON * 132.05 257.8	CLNC DEL 120.525	UNICOM 122.725 (CTAF)
------------------------	---	----------------------------	---------------------------------



ELEV 770		TDZE 769
----------	--	----------

CATEGORY	A	B	C	D
LPV DA		1038-1	269 (300-1)	
LNAV/VNAV DA		1369-2	600 (600-2)	
LNAV MDA	1260-1	491 (500-1)	1260-1½ 491 (500-1½)	1260-1½ 491 (500-1½)
CIRCLING	1260-1 490 (500-1)	1300-1 530 (600-1)	1300-1½ 530 (600-1½)	1360-2 590 (600-2)



HIRL Rwy 9-27
MIRL Rwy 18-36
REIL Rws 9, 18 and 36

EC-2, 25 FEB 2021 to 25 MAR 2021

EC-2, 25 FEB 2021 to 25 MAR 2021