

VORTAC TRV <b>117.3</b> Chan <b>120</b>	APP CRS <b>298°</b>	Rwy ldg <b>7276</b> TDZE <b>22</b> Apt Elev <b>24</b>
---	------------------------	---

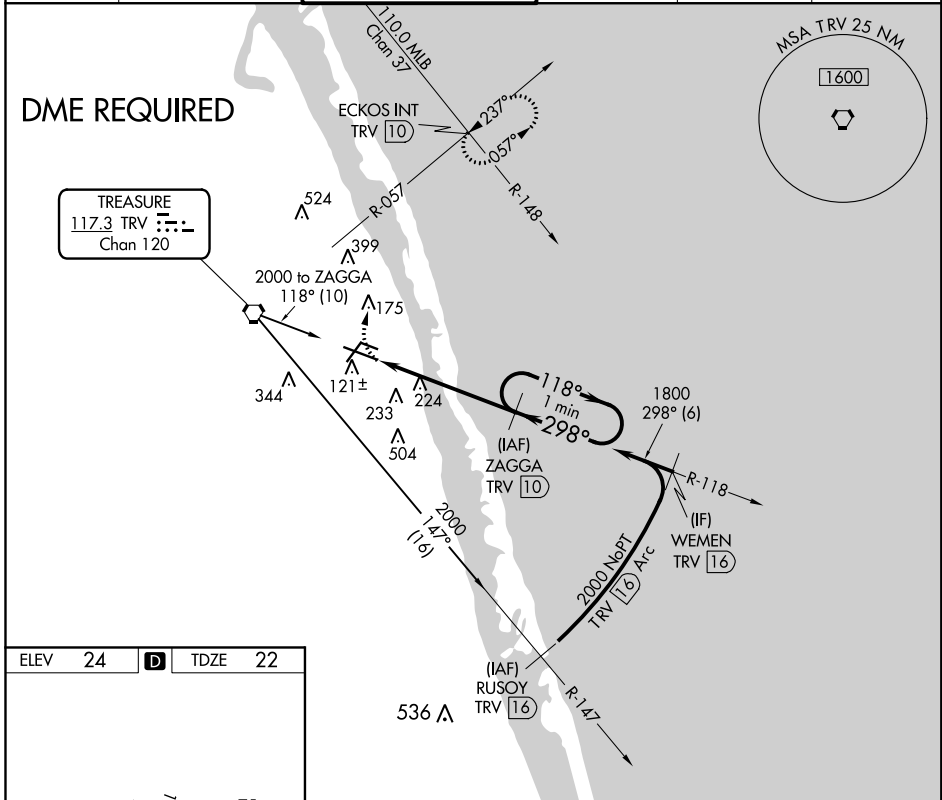
# VOR RWY 30L

VERO BEACH RGNL (VRB)

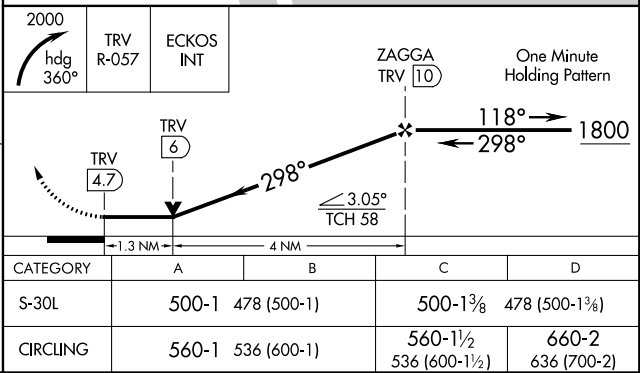
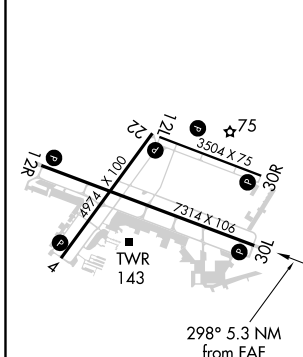
**⚠** Circling to Rwy 30R NA at night. When local altimeter setting not received, use Fort Pierce altimeter setting and increase all MDAs 40 feet. VDP NA with Fort Pierce altimeter setting. DME required.

**⚠** MISSED APPROACH: Climbing right turn to 2000 on heading 360° and TRV VORTAC R-057 to ECKOS INT/TRV 10 DME and hold.

ATIS <b>120.575</b>	PALM BEACH APP CON <b>123.625 225.4 (N)</b>	VERO BEACH TOWER ★ <b>126.3 (CTAF) 0</b>	GND CON <b>127.45</b>	CLNC DEL <b>134.975</b>	UNICOM <b>122.95</b>
------------------------	--	---	--------------------------	----------------------------	-------------------------



ELEV 24	<b>D</b>	TDZE 22
---------	----------	---------



SE-3, 25 FEB 2021 to 25 MAR 2021

SE-3, 25 FEB 2021 to 25 MAR 2021