

LOC/DME I-VSF 111.3 Chan 50	APP CRS 051°	Rwy Idg TDZE Apt Elev	5501 575 577
---	------------------------	-----------------------------	---

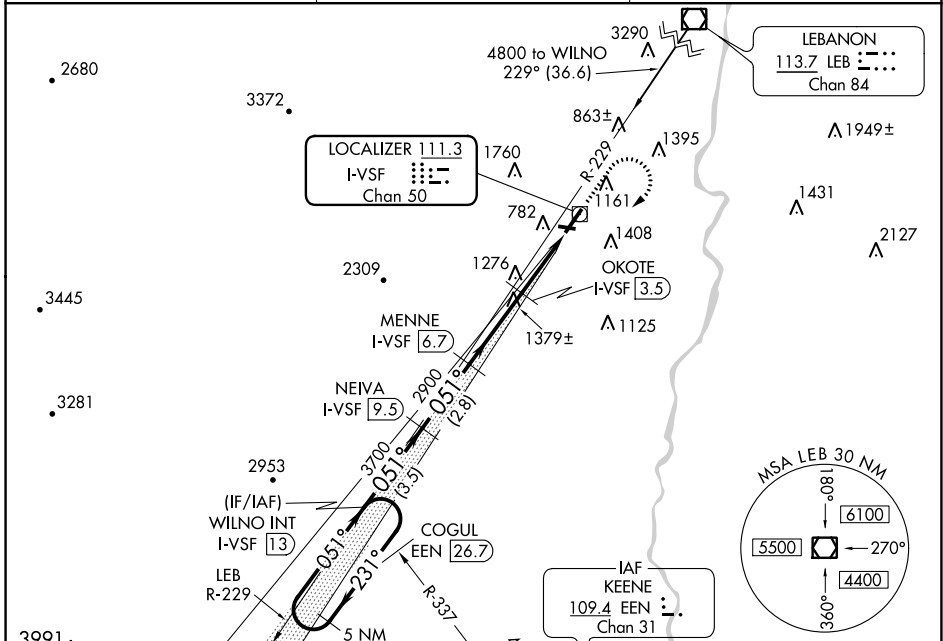
LOC/DME RWY 5

HARTNESS STATE (SPRINGFIELD) (V/SF')

V Helicopter visibility reduction below 3/4 SM NA. Circling to Rwy 11, 23, 29 NA at night.
NA
-24°C

MISSED APPROACH: Climb to 2300 then climbing right turn to 4500 via heading 255° and LEB VOR/DME R-229 to WILNO INT/I-VSF 13 DME and hold, continue climb-in-hold to 4500.

ASOS 121.425	BOSTON CENTER 134.7 381.4	UNICOM 122.8 (CTAF)
------------------------	-------------------------------------	-------------------------------



NE-1, 25 FEB 2021 to 25 MAR 2021

NE-1, 25 FEB 2021 to 25 MAR 2021



ELEV 577	TDZE 575
----------	----------

	5 NM Holding Pattern	WILNO INT I-VSF 13	NEIVA I-VSF 9.5	2300	4500	hdg 255°	LEB R-229	WILNO INT
		4500 ← 231°	051° →	3700	2900	3.64° TCH 59	OKOTE I-VSF 3.5	I-VSF 2.9
		VGSIs and descent angles not coincident (VGSi Angle 4.00/TCH 59).					I-VSF 0.8	
CATEGORY	A	B	C	D				
S-5	1540-1¼ 965 (1000-1¼)	1540-1½ 965 (1000-1½)	1540-3	965 (1000-3)				
CIRCLING	1560-1¼ 983 (1000-1¼)	1720-1½ 1143 (1200-1½)	1720-3 1143 (1200-3)	2400-3 1823 (1900-3)				

