

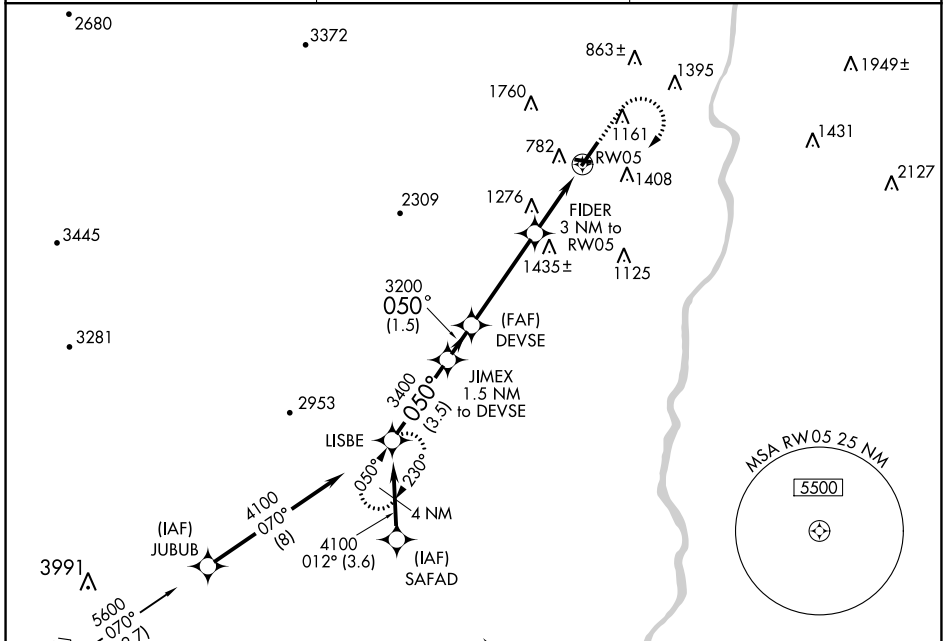
# RNAV (GPS) RWY 5 HARTNESS STATE (SPRINGFIELD) (V5F)

APP CRS <b>050°</b>	Rwy Idg <b>5501</b>
	TDZE <b>575</b>
	Apt Elev <b>577</b>

**⚠** DME/DME RNP-0.3 NA.  
**⚠** Helicopter visibility reduction below ¾ SM NA.  
**⚠** Circling to Rwy 11, 23, 29 NA at night.

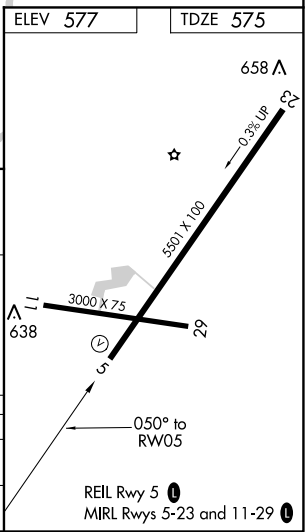
**MISSED APPROACH:** Climb to 1700 then climbing right turn to 4100 direct LISBE and hold.

ASOS <b>121.425</b>	BOSTON CENTER <b>134.7 381.4</b>	UNICOM <b>122.8 (CTAF) 0</b>
------------------------	-------------------------------------	---------------------------------



NE-1, 25 FEB 2021 to 25 MAR 2021

NE-1, 25 FEB 2021 to 25 MAR 2021



	LISBE	JIMEX 1.5 NM to DEVSE	DEVSE	FIDER 3 NM to RW05	RW05	LISBE
	4100	3400	3200	3200	4100	4100
Procedure Turn NA	050°	050°	050°	050°	050°	070°
VGSI and descent angles not coincident (VGSI Angle 4.00/TCH 59).			3.46° TCH 59			
	3.5 NM	1.5	4 NM	0.8	2.2	
CATEGORY	A	B	C	D		
LNAV MDA	1560-1¼ 985 (1000-1¼)	1560-1½ 985 (1000-1½)	1560-3 985 (1000-3)			
CIRCLING	1560-1¼ 983 (1000-1¼)	1720-1½ 1143 (1200-1½)	1720-3 1143 (1200-3)	2400-3 1823 (1900-3)		