

WAAS CH 90237 W03A	APP CRS 028°	Rwy ldg 3701 TDZE 2595 Apt Elev 2595
--	------------------------	---

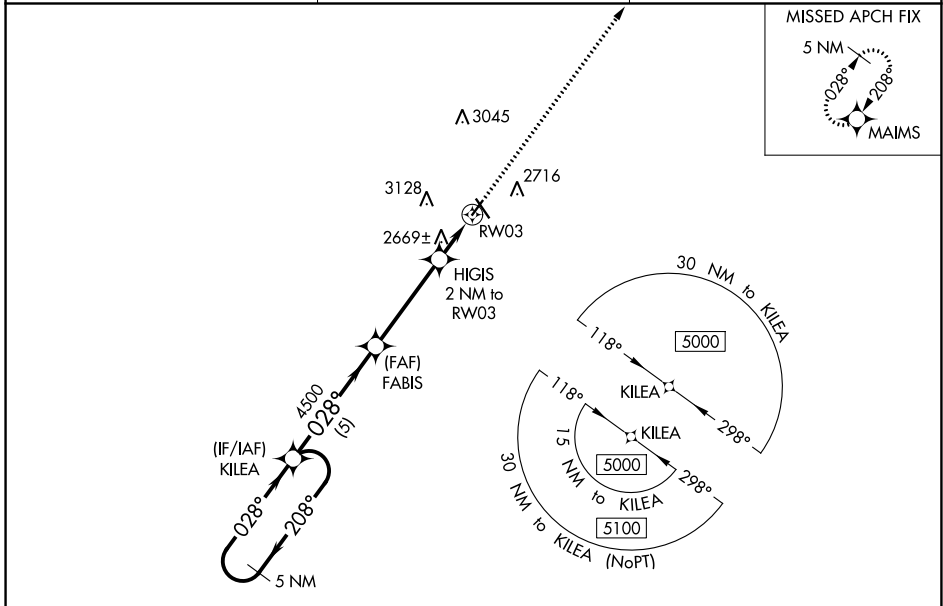
RNAV (GPS) RWY 3

MILLER FIELD (VTN)

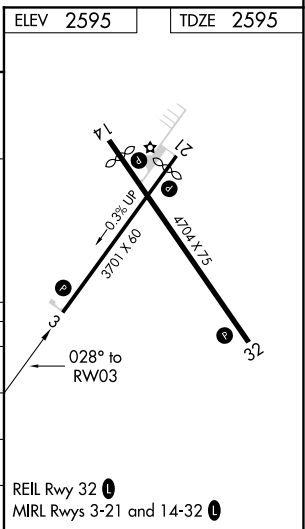
⚠ Baro-VNAV NA when using Ainsworth Rgnl altimeter setting. For uncompensated Baro-VNAV systems, LNAV/VNAV NA below -25°C (-13°F) or above 54°C (130°F). DME/DME RNP-0.3 NA. VDP NA with Ainsworth Rgnl altimeter setting. When local altimeter setting not received, use Ainsworth Rgnl altimeter setting and increase all DA 70 feet and all MDA 80 feet, increase LNAV/VNAV Cat A/B visibility 1/8 mile.

MISSED APPROACH:
Climb to 5000 direct MAIMS and hold.

ASOS 118.075	DENVER CENTER 127.95 338.2	UNICOM 122.8 (CTAF) ①
------------------------	--------------------------------------	---------------------------------



<p>⚠ 3411</p> <p>5 NM Holding Pattern</p> <p>5000 ← 208° / 028° →</p> <p>GP 3.00° TCH 39</p>		<p>KILEA</p> <p>FABIS</p> <p>HIGIS 2 NM to RW03</p> <p>*0.8 NM to RW03</p> <p>RW03</p> <p>*LNAV only.</p> <p>MAIMS</p>		
<p>5000</p> <p>4500</p> <p>*3260</p>		<p>5000</p> <p>MAIMS</p>		
<p>5 NM</p> <p>3.9 NM</p> <p>1.2 NM</p> <p>0.8 NM</p>		<p>5000</p> <p>MAIMS</p>		
CATEGORY	A	B	C	D
LPV DA	2845-1	250 (300-1)		NA
LNAV/VNAV DA	2845-1	250 (300-1)		NA
LNAV MDA	2920-1	325 (400-1)		NA
ⓐ CIRCLING	3080-1 485 (500-1)	3560-1½ 965 (1000-1½)		NA



NC-2, 25 FEB 2021 to 25 MAR 2021

NC-2, 25 FEB 2021 to 25 MAR 2021