

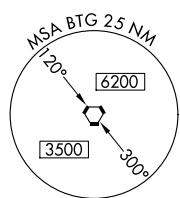
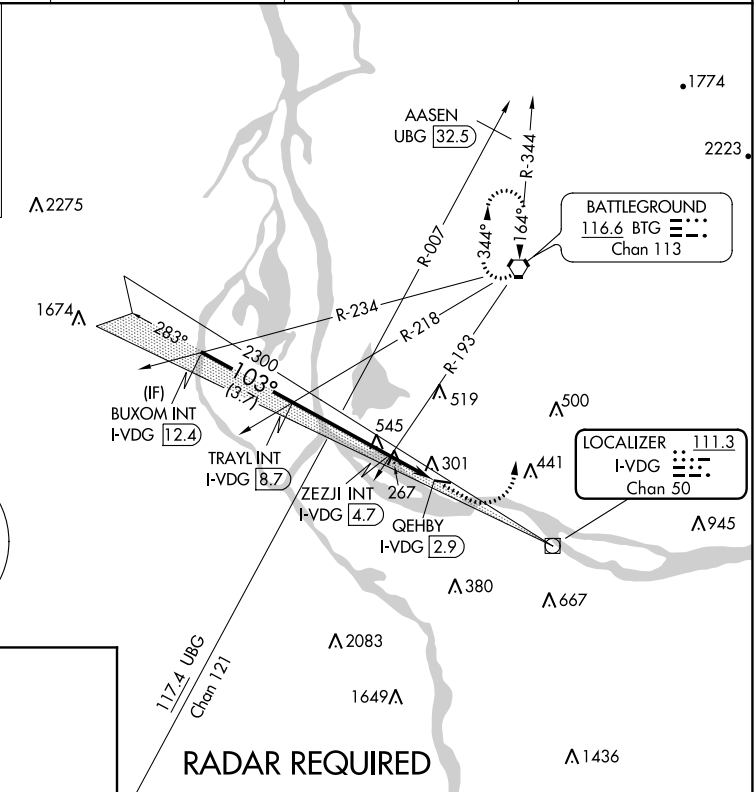
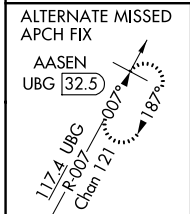
LOC/DME I-VDG 111.3 Chan 50	APP CRS 103°	Rwy Idg TDZE Apt Elev N/A N/A 25
---	------------------------	--

LDA-A
PEARSON FIELD (VUO)

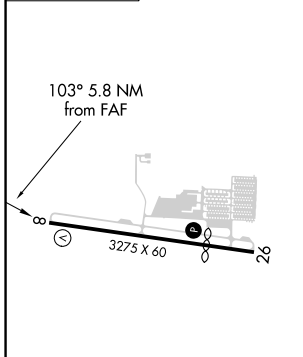
▼ When local altimeter setting not received, use Portland Intl altimeter setting. Helicopter visibility reduction below 1 SM (or RVR 5000 as appropriate) not authorized.

▲ MISSED APPROACH: Climb to 900 then climbing left turn to 4200 direct BTG VORTAC and hold, continue climb-in-hold to 4200.

ASOS 135.125	PORTLAND APP CON 124.35 360.8	CLNC DEL 119.0 (CTAF) 0	UNICOM 123.0
------------------------	---	-----------------------------------	------------------------



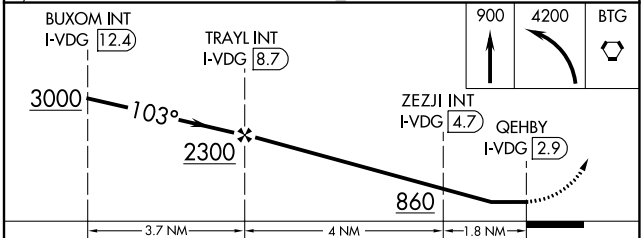
ELEV 25 **D**



REIL Rwy 26
MIRL Rwy 8-26 0

FAF to MAP 5.8 NM

Knots	60	90	120	150	180
Min:Sec	5:48	3:52	2:54	2:19	1:56



CATEGORY	A	B	C	D
CIRCLING	860-1 1/4	835 (900-1 1/4)	NA	NA
ZEZJI FIX MINIMUMS (DUAL VOR RECEIVERS OR DME REQUIRED)				
CIRCLING	700-1 675 (700-1)	740-1 715 (800-1)	NA	NA

NW-1, 25 FEB 2021 to 25 MAR 2021

NW-1, 25 FEB 2021 to 25 MAR 2021