

WAAS CH 87124 W34A	APP CRS 344°	Rwy Idg TDZE Apt Elev	3417 1097 1101
--	------------------------	-----------------------------	---

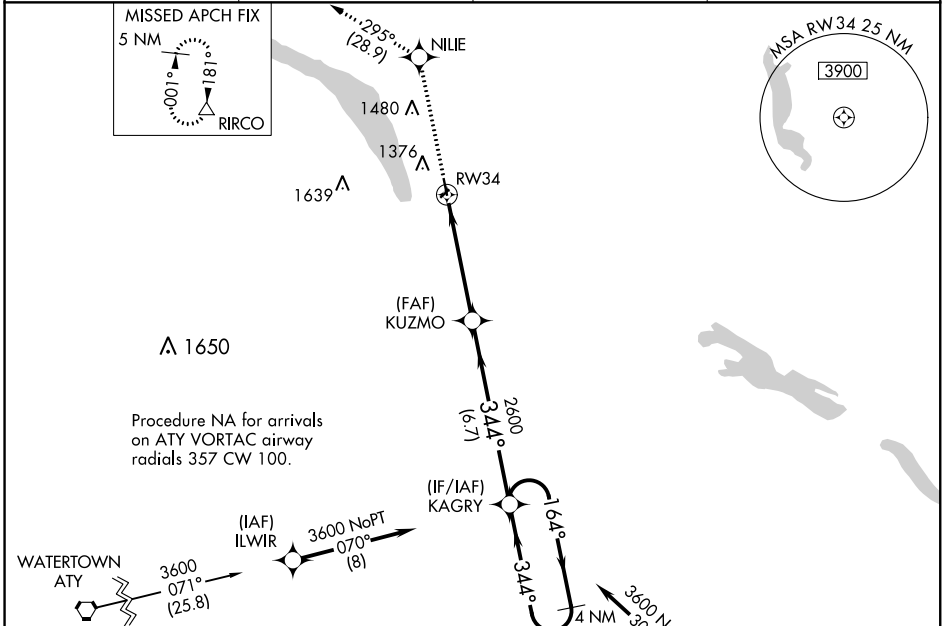
RNAV (GPS) RWY 34

ORTONVILLE MUNI-MARTINSON FIELD (VVV)

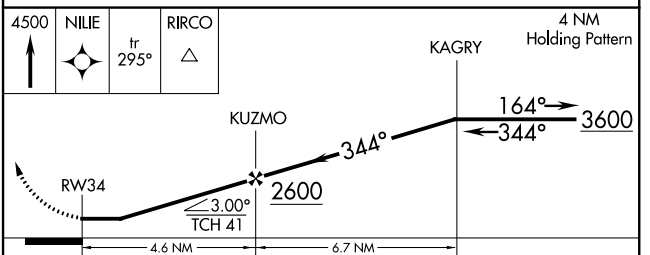
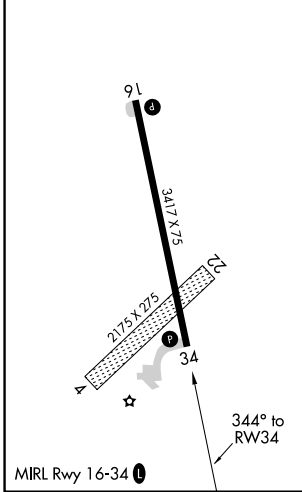
⚠ DME/DME RNP-0.3 NA. Visibility reduction by helicopters NA. Procedure NA at night. When local altimeter setting not received, use Appleton altimeter setting and increase all MDA 60 feet, increase LP and LNAV Cat C visibility to 1½ mile and Circling Cat C visibility to 2 miles.

MISSED APPROACH: Climb to 4500 direct NILIE and on track 295° to RIRCO and hold.

AWOS-3 119.225	MINNEAPOLIS CENTER 128.5 306.2	GCO 121.725	UNICOM 122.8 (CTAF) 0
--------------------------	--	-----------------------	---------------------------------



ELEV 1101	TDZE 1097
-----------	-----------



CATEGORY	A	B	C	D
LP MDA	1520-1	423 (500-1)	1520-1¼ 423 (500-1¼)	NA
LNAV MDA	1520-1	423 (500-1)	1520-1¼ 423 (500-1¼)	NA
CIRCLING	1740-1	639 (700-1)	1740-1¾ 639 (700-1¾)	NA

NC-1, 25 FEB 2021 to 25 MAR 2021

NC-1, 25 FEB 2021 to 25 MAR 2021