

WAAS CH 69632 W17A	APP CRS 169°	Rwy Idg TDZE Apt Elev	4808 39 40
--	------------------------	-----------------------------	---------------------------------------

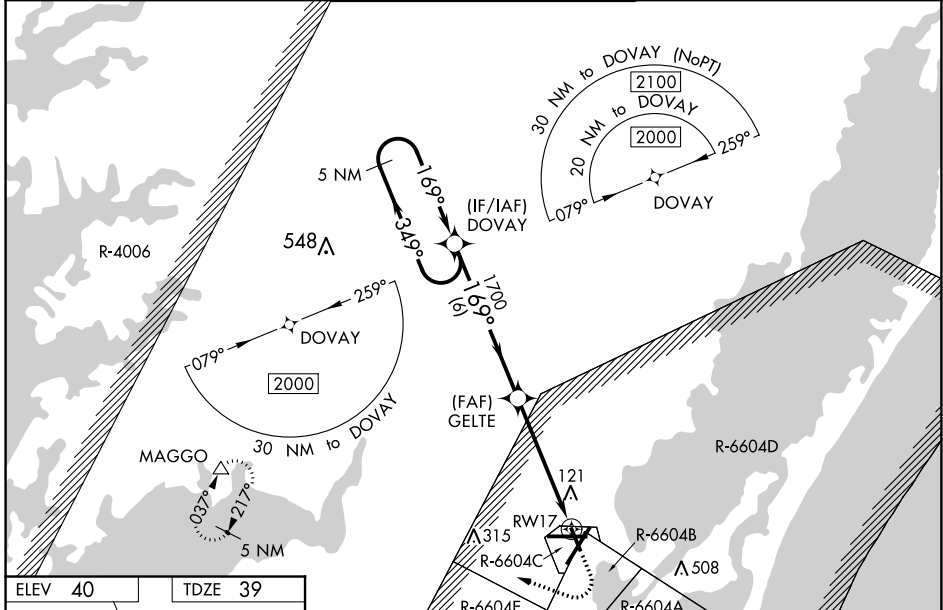
RNAV (GPS) RWY 17

WALLOPS FLIGHT FACILITY (WAL)

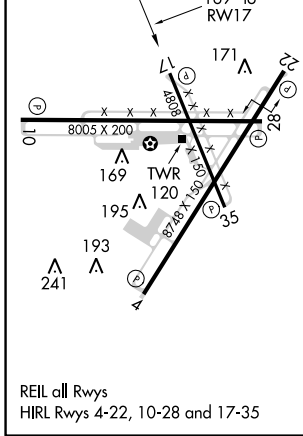
⚠ For uncompensated Baro-VNAV systems, LNAV/VNAV NA below -11°C (13°F) or above 54°C (130°F). DME/DME RNP-0.3 NA. Helicopter visibility reduction below 3/4 SM NA. When local altimeter setting not received, use Salisbury altimeter setting; increase LPV DA to 372 and all Cats visibility 1/8 mile, increase LNAV/VNAV DA to 437 and all Cats visibility 1/4 mile, increase all MDA 60 feet and LNAV Cats C/D visibility 1/8 mile and Circling Cat C visibility 1/4 mile. Baro-VNAV and VDP NA when using Salisbury altimeter setting.

MISSED APPROACH: Climb to 600 then climbing right turn to 2000 direct MAGGO and hold.

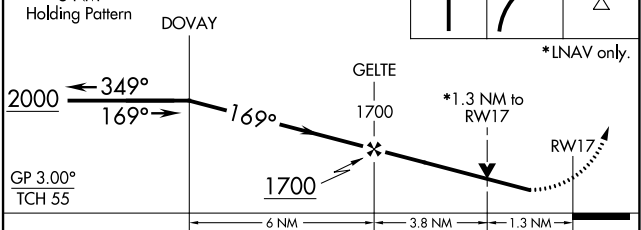
ASOS 119.175	PATUXENT APP CON * 127.95 314.0	WALLOPS TOWER * 126.5 (CTAF) 0 306.975 (CTAF) 0	GND CON 127.875 269.325	CLNC DEL 121.7
------------------------	---	---	-----------------------------------	--------------------------



ELEV 40	TDZE 39
---------	---------



VGSI and RNAV glidepath not coincident (VGSI Angle 3.00/TCH 63).



CATEGORY	A	B	C	D
LPV DA		322-1	283 (300-1)	
LNAV/VNAV DA		387-1 1/8	348 (400-1 1/8)	
LNAV MDA	500-1	461 (500-1)	500-1 3/8	461 (500-1 1/8)
☐ CIRCLING	600-1	560 (600-1)	620-1 1/2 580 (600-1 1/2)	860-2 3/4 820 (900-2 3/4)

NE-3, 25 FEB 2021 to 25 MAR 2021

NE-3, 25 FEB 2021 to 25 MAR 2021