

WAAS CH <b>56331</b> <b>W04A</b>	APP CRS <b>043°</b>	Rwy Idg TDZE Apt Elev	<b>8748</b> <b>37</b> <b>40</b>
--	------------------------	-----------------------------	---------------------------------------

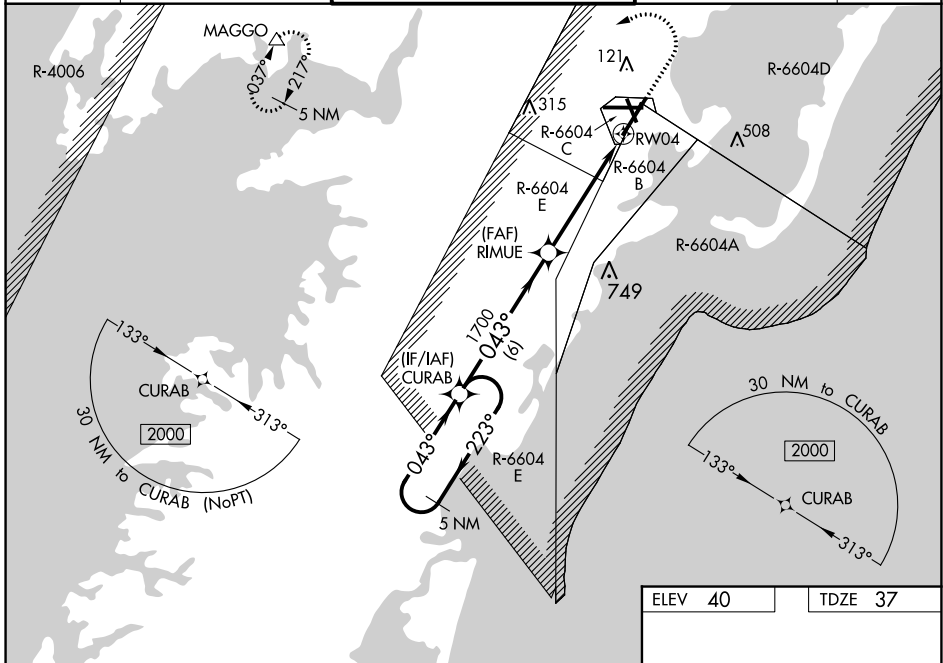
# RNAV (GPS) RWY 4

WALLOPS FLIGHT FACILITY (WAL)

**⚠** For uncompensated Baro-VNAV systems, LNAV/VNAV NA below -11°C (13°F) or above 54°C (130°F). DME/DME RNP-0.3 NA. When local altimeter setting not received, use Salisbury altimeter setting: increase LPV DA to 342 and all Cats visibility ¼ mile; increase LNAV/VNAV DA to 510 and all Cats visibility ¼ mile; increase all MDA 60 feet and LNAV Cats C/D and Circling Cat C visibility ¼ mile. Baro-VNAV and VDP NA when using Salisbury altimeter setting.

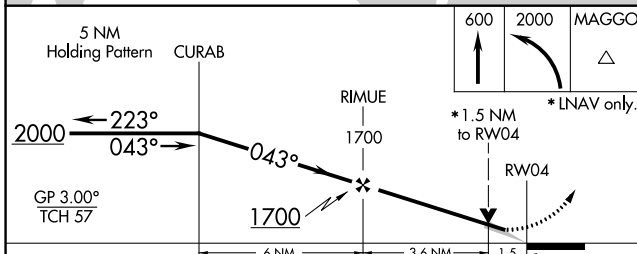
**MISSED APPROACH:** Climb to 600 then climbing left turn to 2000 direct MAGGO and hold.

ASOS <b>119.175</b>	PATUXENT APP CON * <b>127.95 314.0</b>	WALLOPS TOWER * <b>126.5 (CTAF) 0 306.975 (CTAF) 0</b>	GND CON <b>127.875 269.325</b>	CLNC DEL <b>121.7</b>
------------------------	---	---	-----------------------------------	--------------------------



NE-3, 25 FEB 2021 to 25 MAR 2021

NE-3, 25 FEB 2021 to 25 MAR 2021



ELEV 40	TDZE 37
---------	---------

CATEGORY	A	B	C	D
LPV DA		287-¾	250 (300-¾)	
LNAV/VNAV DA		455-1⅞	418 (500-1⅞)	
LNAV MDA	560-1	523 (600-1)	560-1½	523 (600-1½)
<b>C</b> CIRCLING	600-1	560 (600-1)	620-1½ 580 (600-1½)	860-2¾ 820 (900-2¾)

