

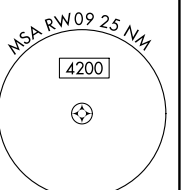
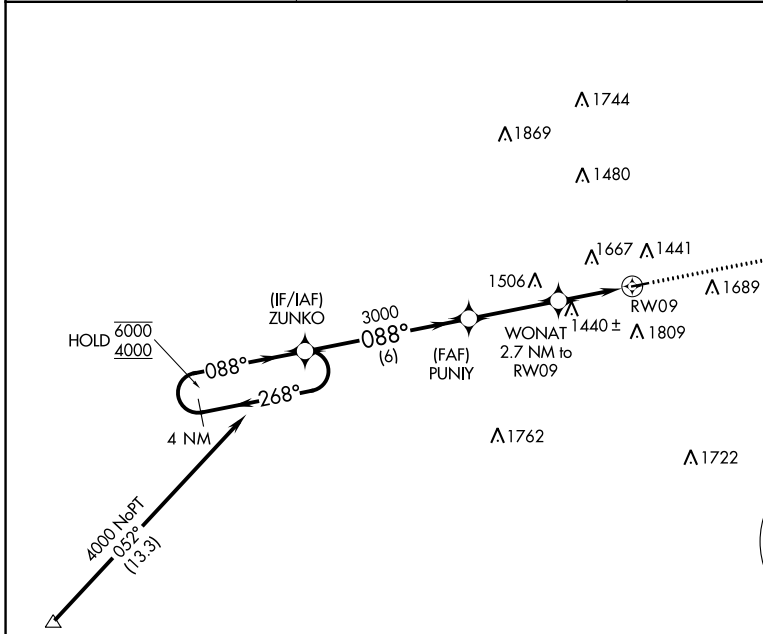
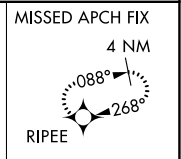
APP CRS	Rwy Idg	3500
088°	TDZE	1069
	Apt Elev	1069

RNAV (GPS) Z RWY 9

GREENE COUNTY (WAY)

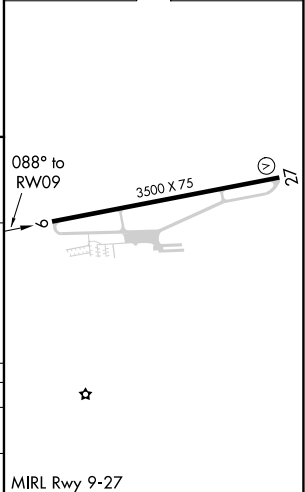
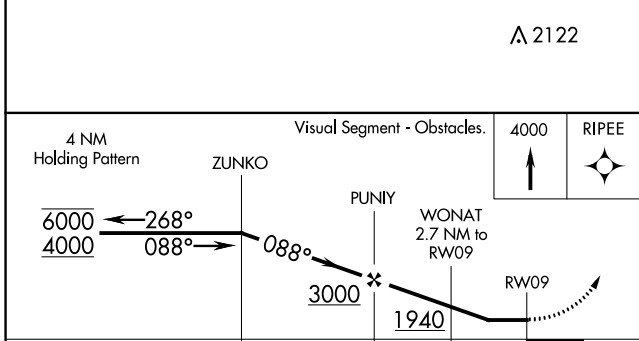
RNP APCH.	<p>▽ Circling Rwy 27 NA at night. Rwy 9 helicopter visibility reduction below 1 SM NA. Use Washington altimeter setting.</p> <p>▲ NA</p>	<p>MISSED APPROACH: Climb to 4000 direct RIPEE and hold, continue climb-in-hold to 4000.</p>
-----------	--	--

AFJ AWOS-3PT 119.175	CLARKSBURG APP CON* 121.15 284.65	UNICOM 122.8 (CTAF) 0
--------------------------------	---	---------------------------------



(IAF) BURGS Procedure NA for arrivals at BURGS on V103-309 CW V144.

ELEV 1069	TDZE 1069
-----------	-----------



CATEGORY	A	B	C	D
LNVA MDA	1760-1	691 (700-1)	1760-2 691 (700-2)	NA
C CIRCLING	1880-1¼ 811 (900-1¼)	2220-1½ 1151 (1200-1½)	2220-3 1151 (1200-3)	NA

NE-4, 25 FEB 2021 to 25 MAR 2021

NE-4, 25 FEB 2021 to 25 MAR 2021