

LOC/DME I-HDR 111.5 Chan 52	APP CRS 316°	Rwy Idg TDZE Apt Elev	4600 922 934
---	------------------------	-----------------------------	---

ILS or LOC RWY 31

BARROW COUNTY (WDR)

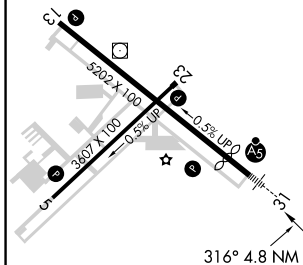
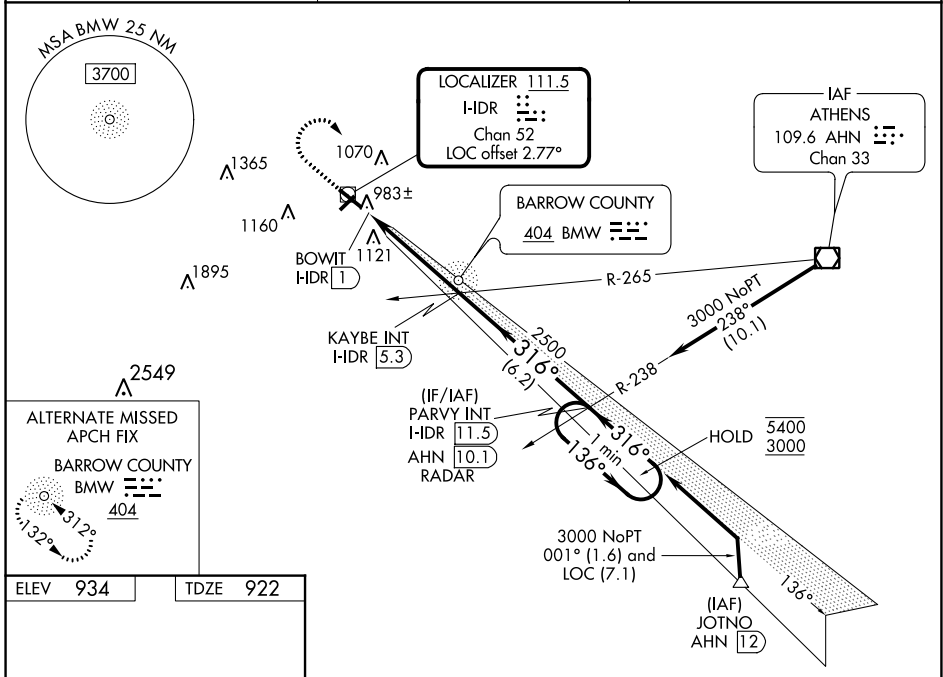
DME or RADAR required for procedure entry.

▼ Rwy 31 helicopter visibility reduction below 3/4 SM NA. Inop table does not apply to S-ILS 31. For inop ALS, increase S-LOC 31 all Cats visibility to 1 SM. Circling Rwy 13, 23 NA at night.

MALSR
AS

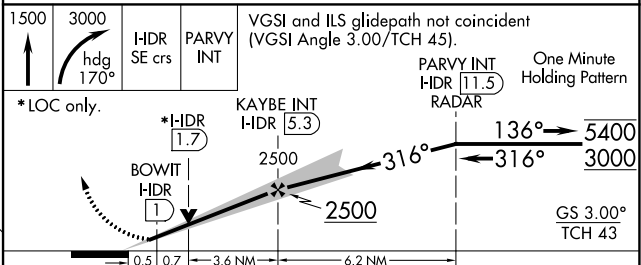
MISSED APPROACH: Climb to 1500 then climbing right turn to 3000 via heading 170° and HDR SE course to PARVY INT/I-HDR 111.5 DME/RADAR and hold.

AWOS-3 118.575	ATLANTA APP CON ★ 132.475 291.1	UNICOM 123.0 (CTAF) 0
--------------------------	---	---------------------------------



REIL Rwy 31
HIRL Rwy 13-31
MIRL Rwy 5-23
FAF to MAP 4.3 NM

Knots	60	90	120	150	180
Min:Sec	4:18	2:52	2:09	1:43	1:26



CATEGORY	A	B	C	D
S-ILS 31		1172-3/4	250 (300-3/4)	
S-LOC 31		1300-3/4	378 (400-3/4)	
CIRCLING	1400-1 466 (500-1)	1500-1 566 (600-1)	1500-1 1/2 566 (600-1 1/2)	1500-2 566 (600-2)

SE-4, 25 FEB 2021 to 25 MAR 2021

SE-4, 25 FEB 2021 to 25 MAR 2021