


NDB	BMW	APP CRS	Rwy Idg	4600
	<b>404</b>	<b>312°</b>	TDZE	<b>922</b>
			Apt Elev	<b>934</b>


# NDB RWY 31

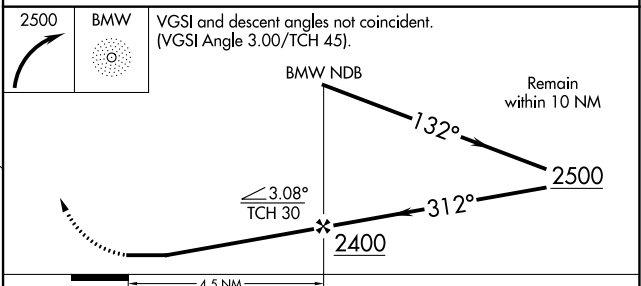
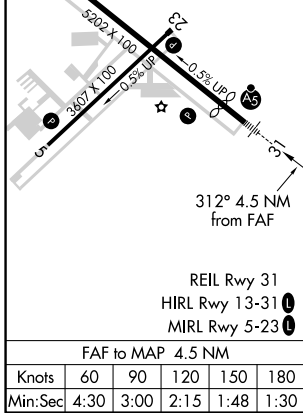
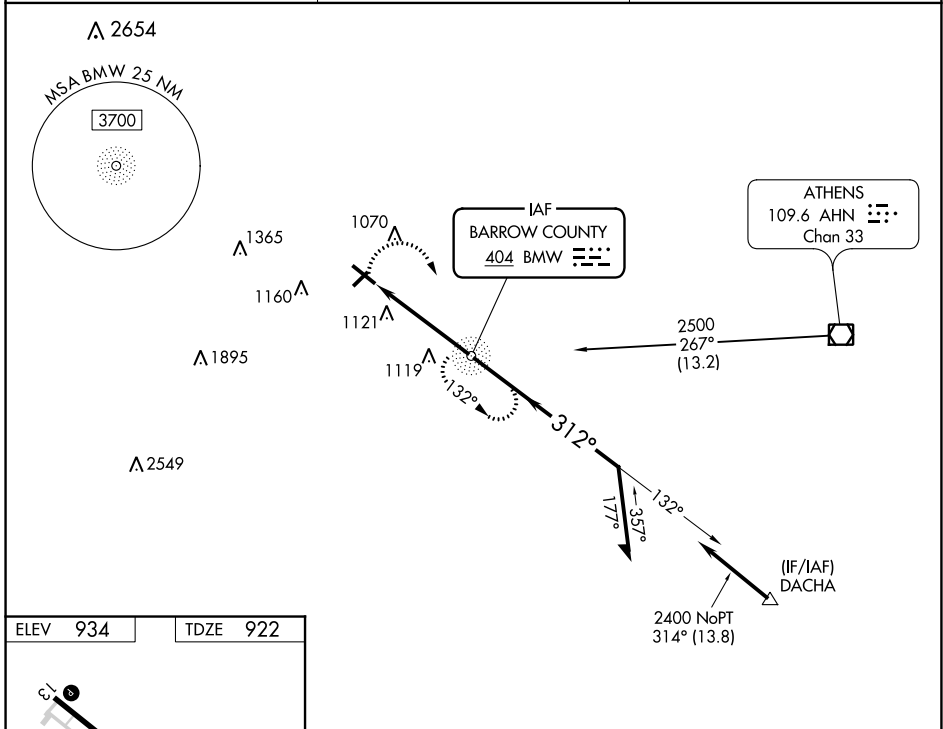
BARROW COUNTY (WDR)

▼ For inop ALS, increase S-31 Cat A/B visibility to 1 SM. Circling Rwy 13, 23 NA at night. Rwy 31 helicopter visibility reduction below  $\frac{3}{4}$  SM NA.

MALSR 

MISSED APPROACH: Climbing right turn to 2500 direct BMW NDB and hold.

AWOS-3 <b>118.575</b>	ATLANTA APP CON ★ <b>132.475 291.1</b>	UNICOM <b>123.0</b> (CTAF) 
--------------------------	---	---



CATEGORY	A	B	C	D
S-31	1480- $\frac{3}{4}$	558 (600- $\frac{3}{4}$ )	1480- $\frac{1}{8}$	558 (600- $\frac{1}{8}$ )
CIRCLING	1480-1 548 (600-1)	1500-1 566 (600-1)	1500- $\frac{15}{8}$ 566 (600- $\frac{15}{8}$ )	1500-2 566 (600-2)

SE-4, 25 FEB 2021 to 25 MAR 2021

SE-4, 25 FEB 2021 to 25 MAR 2021