

WAAS CH 82516 W23A	APP CRS 231°	Rwy Idg TDZE Apt Elev	3607 929 934
--	------------------------	-----------------------------	---

RNAV (GPS) RWY 23

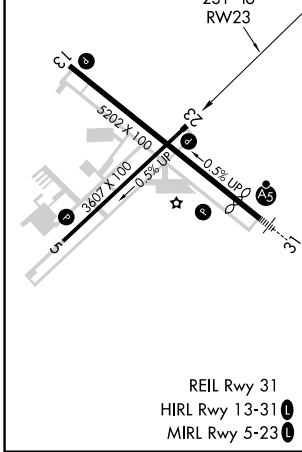
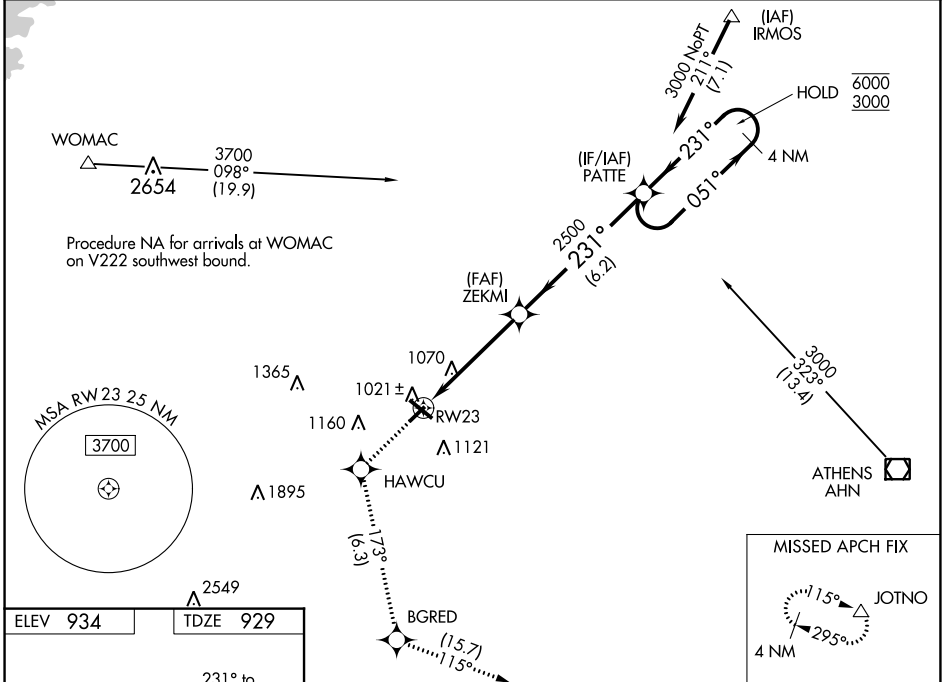
BARROW COUNTY (WDR)

RNP APCH.

▼ For uncompensated Baro-VNAV systems, LNAV/VNAV NA below -16°C or above 54°C. Straight-in Rwy 23 NA at night, Circling Rwy 13, 23 NA at night. Rwy 23 helicopter visibility reduction below 1 SM NA.

MISSED APPROACH: Climb to 3000 direct HAWCU and on track 173° to BGRED and on track 115° to JOTNO and hold.

AWOS-3 118.575	ATLANTA APP CON ★ 132.475 291.1	UNICOM 123.0 (CTAF) 1
--------------------------	---	---------------------------------



3000	HAWCU	tr 173°	BGRED	tr 115°	JOTNO	PATTE	4 NM Holding Pattern
			ZEKMI	2500		051°	6000
						231°	3000
							GP 3.00° TCH 40
			4.8 NM	6.2 NM			
CATEGORY	A	B	C	D			
LPV DA		1179-1	250 (300-1)				
LNAV/VNAV DA		1274-1	345 (400-1)				
LNAV MDA	1320-1	391 (400-1)	1320-1½	391 (400-1½)			
CIRCLING	1400-1 466 (500-1)	1500-1 566 (600-1)	1500-1½ 566 (600-1½)	1500-2 566 (600-2)			

SE-4, 25 FEB 2021 to 25 MAR 2021

SE-4, 25 FEB 2021 to 25 MAR 2021