

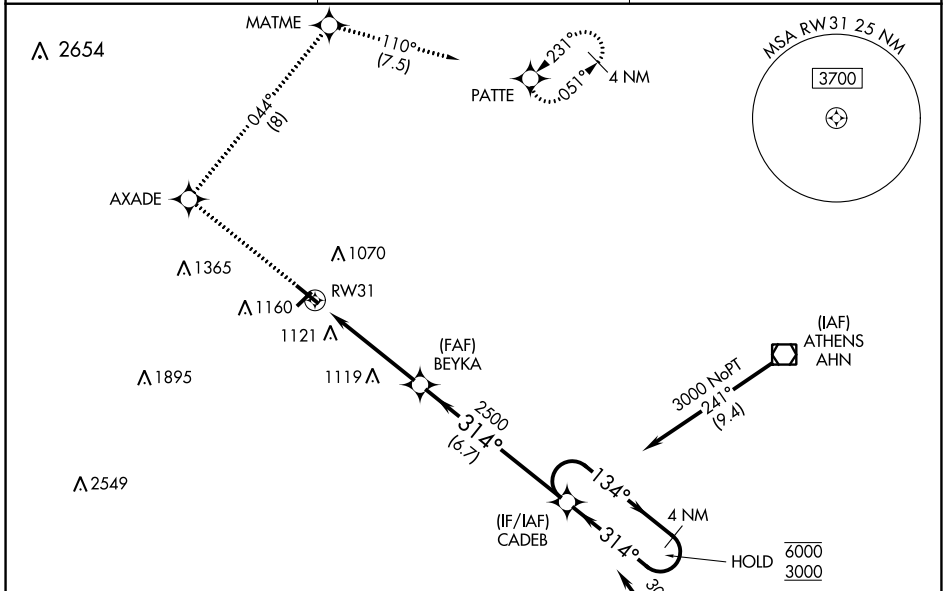
WAAS CH 69305 W31A	APP CRS 314°	Rwy Idg TDZE 922 Apt Elev 934	4600
--	------------------------	---	-------------

RNAV (GPS) RWY 31

BARROW COUNTY (WDR)

RNP APCH.	MALSR	MISSED APPROACH: Climb to 3000 direct AXADE and right turn on track 044° to MATME and track 110° to PATTE and hold.
-----------	-------	---

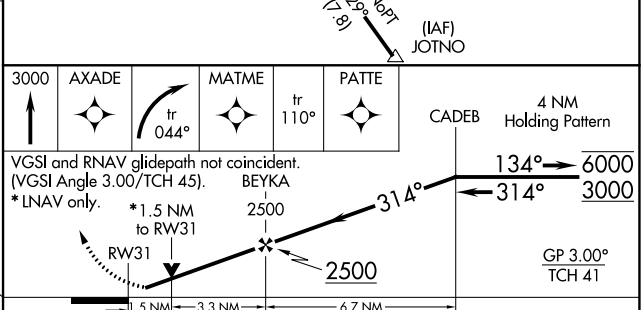
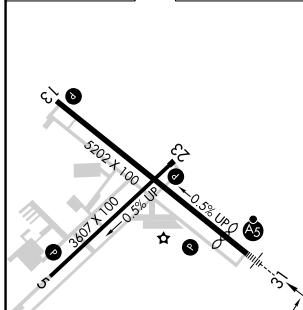
AWOS-3 118.575	ATLANTA APP CON ★ 132.475 291.1	UNICOM 123.0 (CTAF)
--------------------------	---	-------------------------------



SE-4, 25 FEB 2021 to 25 MAR 2021

SE-4, 25 FEB 2021 to 25 MAR 2021

ELEV 934	TDZE 922
----------	----------



CATEGORY	A	B	C	D
LPV DA		1172-¾	250 (300-¾)	
LNNAV/VNAV DA		1274-¾	352 (400-¾)	
LNNAV MDA	1420-¾	498 (500-¾)	1420-1	498 (500-1)
CIRCLING	1420-1 486 (500-1)	1500-1 566 (600-1)	1500-1½ 566 (600-1½)	1500-2 566 (600-2)

REIL Rwy 31
HIRL Rwy 13-31
MIRL Rwy 5-23