

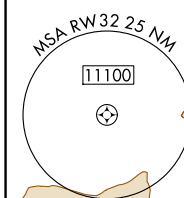
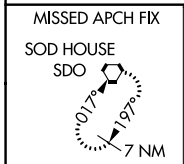
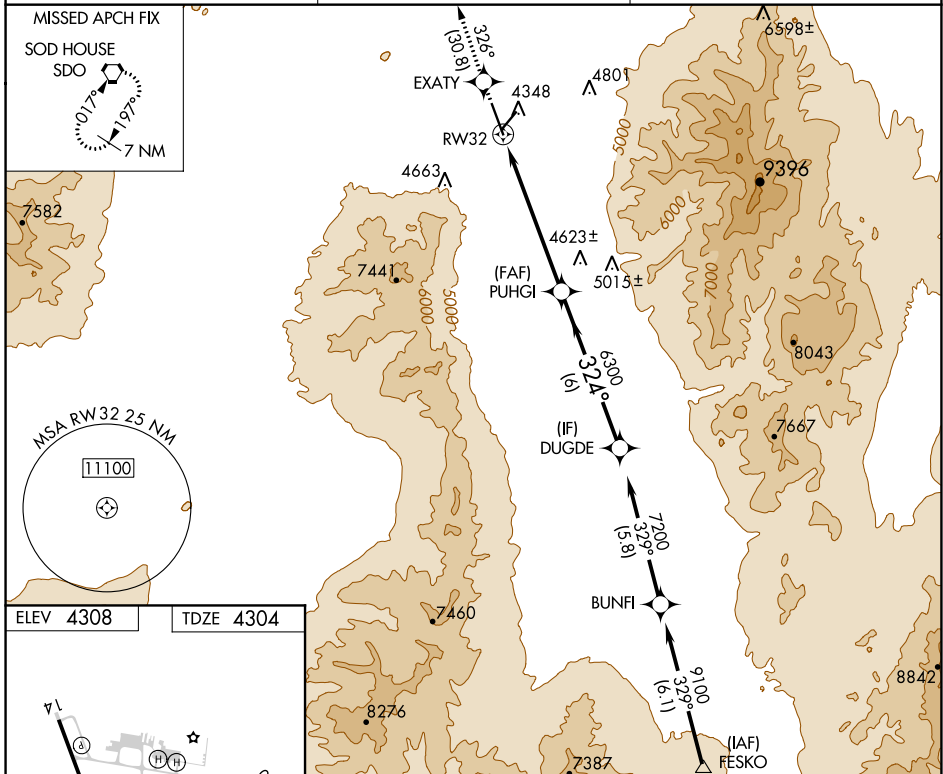
WAAS CH <b>72702</b> <b>W32A</b>	APP CRS <b>324°</b>	Rwy Idg TDZE Apt Elev	<b>7000</b> <b>4304</b> <b>4308</b>
--	------------------------	-----------------------------	---

# RNAV (GPS) RWY 32

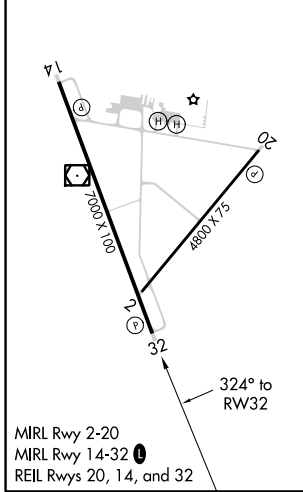
WINNEMUCCA MUNI (WMC)

RNP APCH.	MISSED APPROACH: Climb to 10000 direct EXATY and on track 326° to SDO VORTAC and hold.
<p>▼ Rwy 32 helicopter visibility reduction below 3/4 SM NA.</p> <p>▲ VDP NA when using Battle Mountain altimeter setting.</p> <p>When local altimeter setting not received, use Battle Mountain altimeter setting and increase all DAs/MDAs 140 feet.</p>	

ASOS <b>120.175</b>	SALT LAKE CITY CENTER <b>132.25 338.35</b>	UNICOM <b>122.8 (CTAF) 0</b>
------------------------	---	---------------------------------



ELEV 4308	TDZE 4304
-----------	-----------



MIRL Rwy 2-20  
MIRL Rwy 14-32  
REIL Rwy 20, 14, and 32

10000	EXATY	tr 326°	SDO	VGSI And RNAV glidepath not coincident (VGSI Angle 3.00/TCH 40).
			PUHGI	DUGDE 7200
*LNAV only		*1.7 NM to RW32		GP 3.00° TCH 45
CATEGORY	A	B	C	D
LPV DA	4554-3/4 250 (300-3/4)			
LNAV MDA	4880-1	576 (600-1)	4880-1 1/2 576 (600-1 1/2)	4880-1 3/4 576 (600-1 3/4)

SW-4, 25 FEB 2021 to 25 MAR 2021

SW-4, 25 FEB 2021 to 25 MAR 2021