

HI-VOR/DME or TACAN RWY 15

VORTAC MCN 114.2 Chan 89	APCH CRS 134°	Rwy ldg 12,001 THRE 293 Arprt Elev 294
--	-------------------------	---

JAL-442 [USAF]

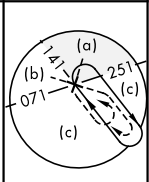
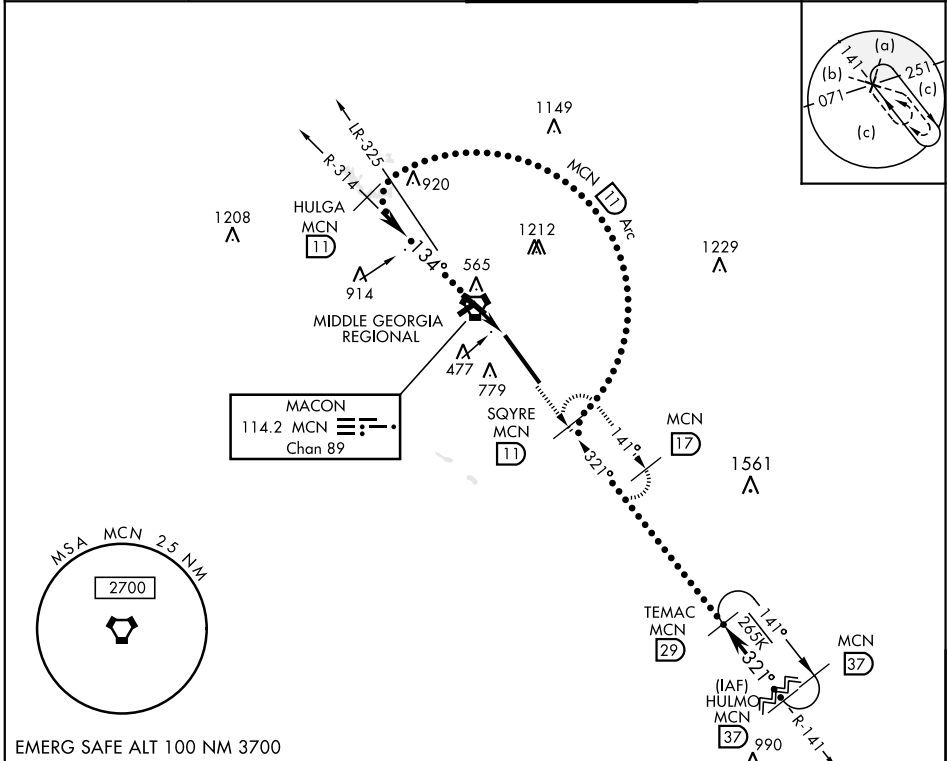
ROBINS AFB (KWRB)

* When ALS inop, increase CAT C vis to 1½ miles, CAT D vis to 1¾ miles, and CAT E vis to 2 miles.
** Circling not authorized W of Rwy 15-33.



MISSED APPROACH: Climb to 2700 out MCN R-141 to SQYRE and hold.

ATIS 119.475 273.475	ATLANTA APP CON 124.2 279.6	ROBINS TOWER 133.225 257.975	GND CON 121.85 275.8
--------------------------------	---------------------------------------	--	--------------------------------



SE-4, 25 FEB 2021 to 25 MAR 2021

SE-4, 25 FEB 2021 to 25 MAR 2021

EMERG SAFE ALT 100 NM 3700

VGSI and descent angles not coincident 			2700 MCN R-141 SQYRE MCN 11	ELEV 294 THRE 293 134° 3.2 NM from MCN VORTAC 480 A TWR 373 12601.330 HIRL Rwy 15-33 ☆457 FAF to MAP 3.0 NM
CATEGORY	C	D	E	
S-15 *	760/50	467	(500-1)	
CIRCLING **	840-1½ 546 (600-1½)	960-2 666 (700-2)	1100-2¾ 806 (900-2¾)	
				Knots 120 140 160 180 200 Min:Sec 1:30 1:17 1:08 1:00 0:54

HI-VOR/DME or TACAN RWY 15