

WARNER ROBINS, GEORGIA

# RNAV (GPS) RWY 15

APCH CRS	Rwy Idg	12,001
146°	TDZE	293
	Arpt Elev	294

AL-442 (USAF)

ROBINS AFB (KWRB)

\* When ALS inop, increase CAT AB RVR to 55, vis to 1 mile, CAT CDE vis to 1 5/8 miles.  
 \*\* Circling NA SW of Rwy 15-33.



MISSED APPROACH: Climb to 2700 direct LETIC and hold.

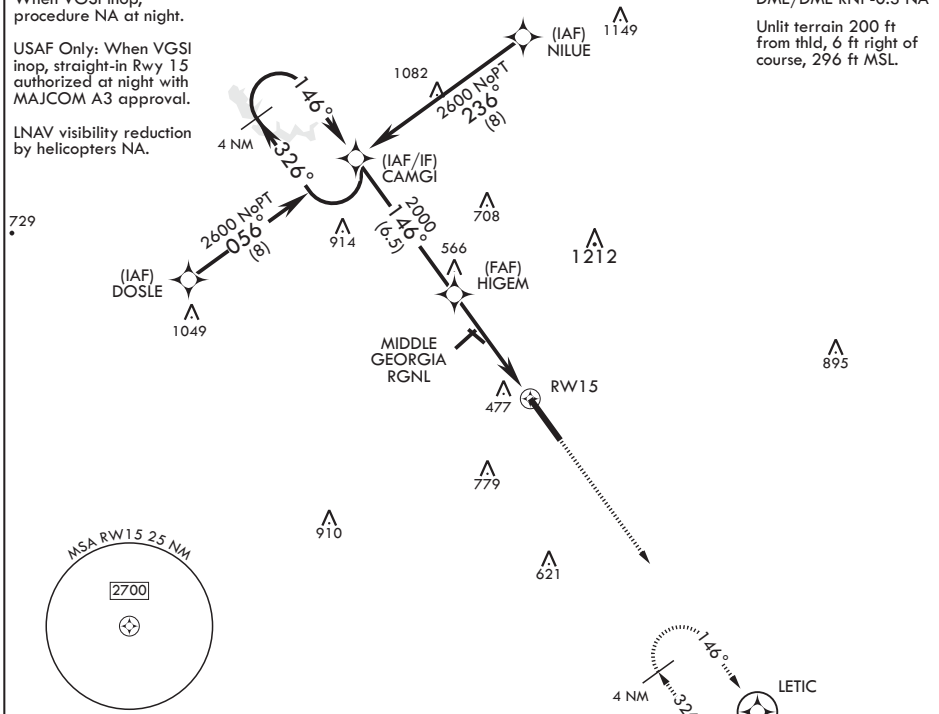
ATIS 119.475 273.475	ATLANTA APP CON/DEP CON 124.2 279.6	TOWER 133.225 257.975	GND CON 121.85 275.8
-------------------------	--	--------------------------	-------------------------

When VGSi inop, procedure NA at night.

USAF Only: When VGSi inop, straight-in Rwy 15 authorized at night with MAJCOM A3 approval.

LNAV visibility reduction by helicopters NA.

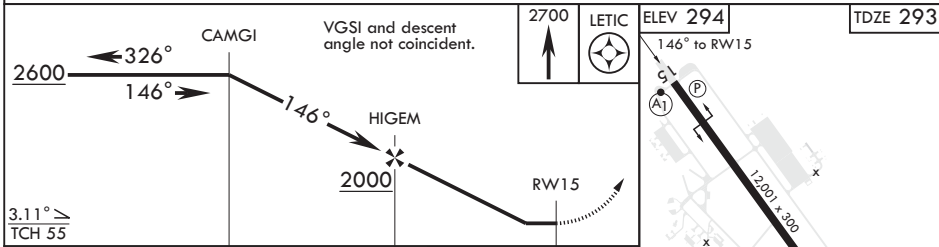
DME/DME RNP-0.3 NA  
 Unlit terrain 200 ft from thld, 6 ft right of course, 296 ft MSL.



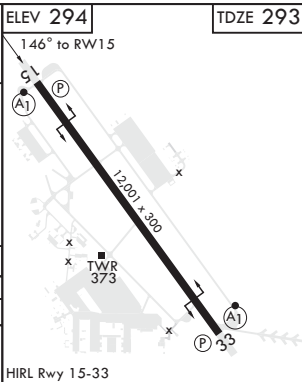
SE-4, 25 FEB 2021 to 25 MAR 2021

SE-4, 25 FEB 2021 to 25 MAR 2021

EMERG SAFE ALT 100 NM 3700



CATEGORY	A	B	C	D	E
LNAV MDA*	860/50	566 (600-1)	860-1 1/4	566 (600-1 1/4)	
CIRCLING**	860-1	567 (600-1)	860-1 5/8 567 (600-1 5/8)	960-2 667 (700-2)	1100-2 3/4 807 (900-2 3/4)



WARNER ROBINS, GEORGIA

32°38'N - 83°36'W

ROBINS AFB (KWRB)

Amdt 4 31JAN19

# RNAV (GPS) RWY 15