

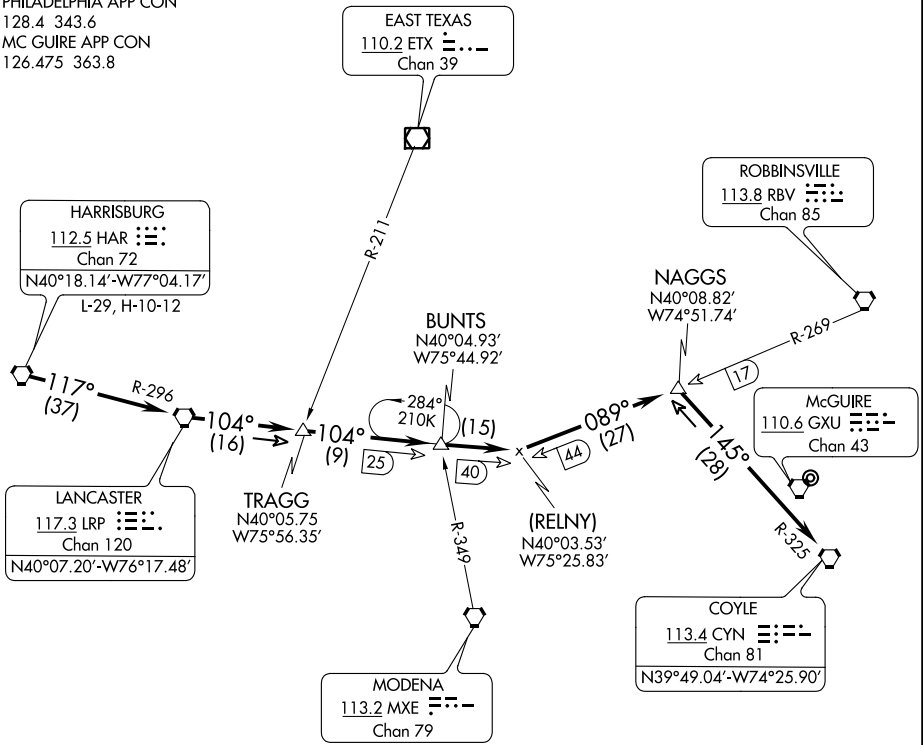
(HAR.HAR5) 20310
HARRISBURG FIVE ARRIVAL

AL-150 (FAA)

MC GUIRE FIELD
 (JOINT BASE MC GUIRE DIX LAKEHURST) (WRI)
 WRIGHTSTOWN, NEW JERSEY

D-ATIS

110.6 270.1
 PHILADELPHIA APP CON
 128.4 343.6
 MC GUIRE APP CON
 126.475 363.8



NE-2, 25 FEB 2021 to 25 MAR 2021

NE-2, 25 FEB 2021 to 25 MAR 2021

- NOTE: Route depicted beyond Naggs Int is for lost communications or radar outage only.
- NOTE: Not for use by fighter type aircraft.
- NOTE: Descent below 3500 prior to NAGGS may transition below the KPHL class Bravo Airspace.
- NOTE: Chart not to scale

ARRIVAL ROUTE DESCRIPTION

From over HAR VORTAC via HAR R-117 and LRP R-296 to LRP VORTAC. Thence via LRP R-104 to LRP R-104/40 DME and RBV R-269/44 DME. Thence via RBV R-269 to NAGGS INT. Thence via CYN R-325 to CYN VORTAC. Expect radar vector to final approach 8 DME west of GXU VORTAC. Expect descent below 10000 after HAR VORTAC.

HARRISBURG FIVE ARRIVAL
 (HAR.HAR5) 22MAY97

MC GUIRE FIELD
 (JOINT BASE MC GUIRE DIX LAKEHURST) (WRI)
 WRIGHTSTOWN, NEW JERSEY