

VOR/DME or TACAN RWY 18

MC GUIRE FLD,
(JOINT BASE MC GUIRE DIX LAKEHURST) (KWRI)

VORTAC GXU 110.6 Chan 43	APCH CRS 179°	Rwy ldg 7126 TDZE 123 Arprt Elev 141
--	-------------------------	---

AL-150 [USAF]

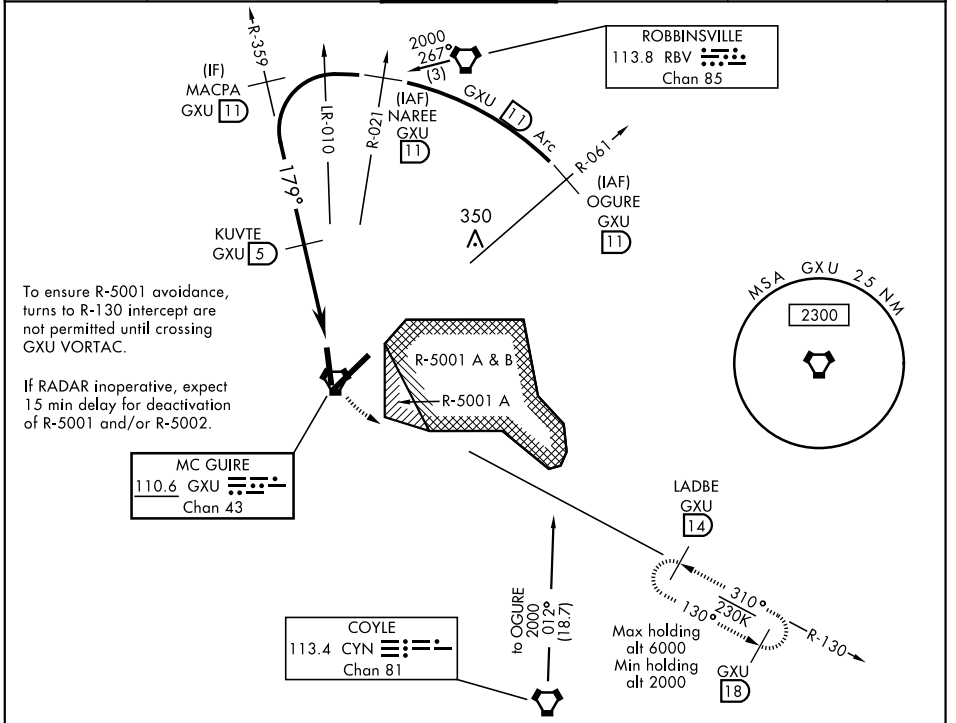
(JOINT BASE MC GUIRE DIX LAKEHURST) (KWRI)

RADAR required when R-5001 and/or R-5002 is active.

MISSED APPROACH: Climb to 2000 via GXU VORTAC
R-130 to LADBE and hold, DO NOT turn prior to GXU.

▼ * Circling East of airfield NA when R-5001 A/B active.

ATIS 110.6 270.1	MC GUIRE APP CON 126.475 363.8	MC GUIRE TOWER 118.65 255.6	GND CON 121.8 275.8	CLNC DEL 135.2 335.8	PAR
----------------------------	--	---------------------------------------	-------------------------------	--------------------------------	-----

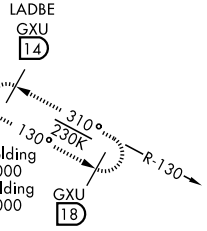
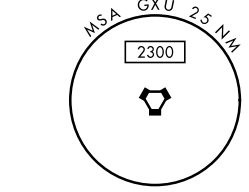


To ensure R-5001 avoidance, turns to R-130 intercept are not permitted until crossing GXU VORTAC.

If RADAR inoperative, expect 15 min delay for deactivation of R-5001 and/or R-5002.

MC GUIRE
110.6 GXU
Chan 43

COYLE
113.4 CYN
Chan 81



EMERG SAFE ALT 100 NM 5100 FROM GXU VORTAC

OGURE R-061 (11)	NAREE R-021 (11)	MACPA R-359 (11)	KUVTE (5)	IPURE (1.5)	VORTAC	2000 GXU R-130 (14)	LADBE GXU (14)	ELEV 141	TDZE 123
CATEGORY	A	B	C	D	E				
S-18	620-1	497 (500-1)	620-1½	497 (500-1½)					
CIRCLING*	680-1	539 (600-1)	700-1½ 559 (600-1½)	700-2 559 (600-2)	1200-3 1059 (1100-3)				

VOR/DME or TACAN RWY 18

NE-2, 25 FEB 2021 to 25 MAR 2021

NE-2, 25 FEB 2021 to 25 MAR 2021