

WAAS CH 40228 W16A	APP CRS 162°	Rwy Idg TDZE Apt Elev	7000 4202 4252
--	------------------------	-----------------------------	---

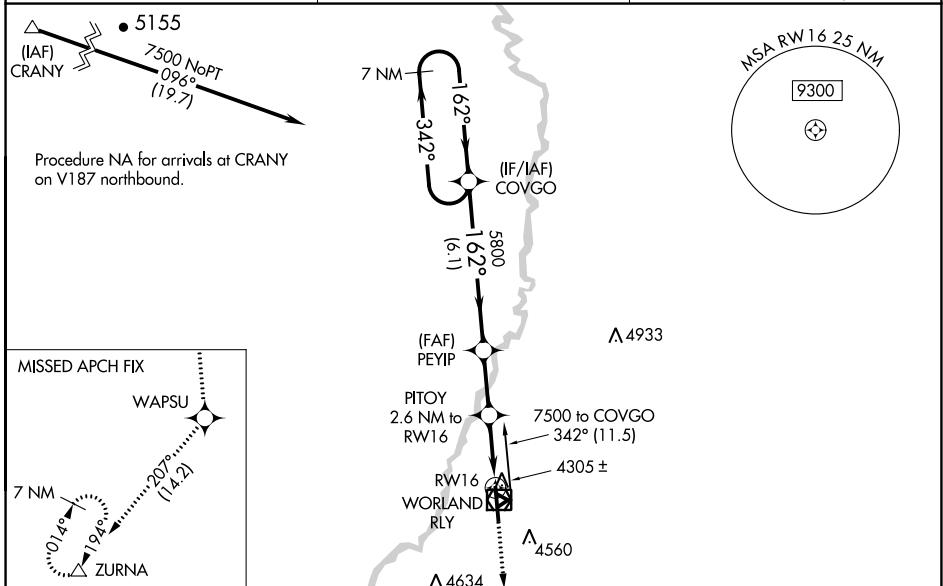
RNAV (GPS) RWY 16

WORLAND MUNI (WRL)

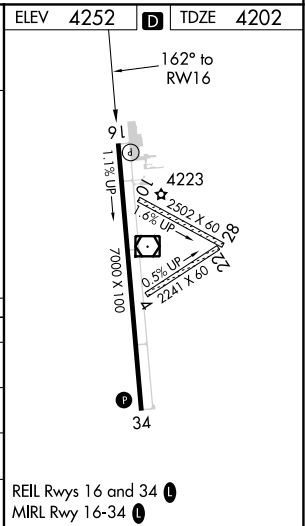
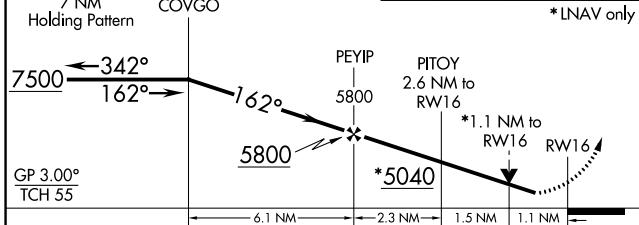
⚠ For uncompensated Baro-VNAV systems, LNAV/VNAV NA below -32°C (-25°F) or above 17°C (62°F). DME/DME RNP-0.3 NA. VDP and Baro-VNAV NA with Greibull altimeter setting. When local altimeter not received, use Greibull altimeter setting and increase all DA/MDA 140 feet, and all visibilities ½ mile. Helicopter visibility reduction below ¾ SM NA.

⚠ MISSED APPROACH: Climb to 9600 direct WAPSU and on track 207° to ZURNA and hold, continue climb-in-hold to 9600.

ASOS 135.475	SALT LAKE CENTER 133.25 285.6	UNICOM 123.05 (CTAF)
------------------------	---	--------------------------------



VGSI and RNAV glidepath not coincident (VGSI Angle 3.00/TCH 41).	9600 ↑	WAPSU ✧	ZURNA △	ELEV 4252	TDZE 4202
--	-----------	------------	------------	-----------	-----------



CATEGORY	A	B	C	D
LPV DA		4452-¾	250 (200-¾)	
LNAV/VNAV DA		4494-7/8	292 (300-7/8)	
LNAV MDA	4560-1	358 (400-1)	4560-1 1/8	358 (400-1 1/8)
CIRCLING	4880-1 628 (700-1)	4900-1 648 (700-1)	4900-1 3/4 648 (700-1 3/4)	4900-2 648 (700-2)

NW-1, 25 FEB 2021 to 25 MAR 2021

NW-1, 25 FEB 2021 to 25 MAR 2021