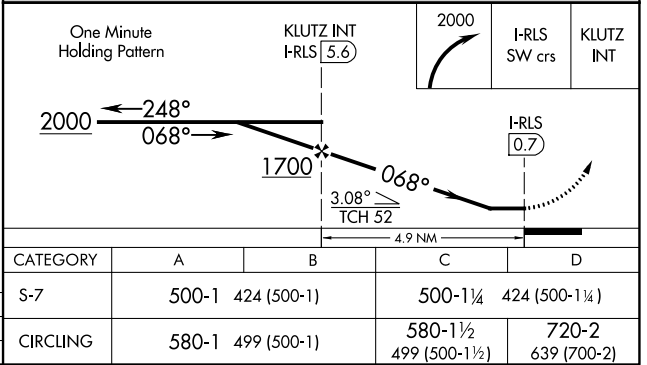
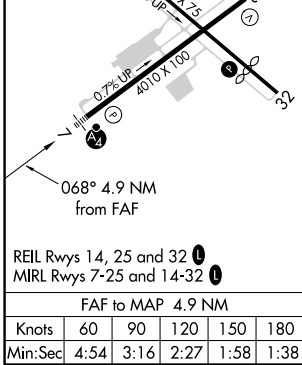
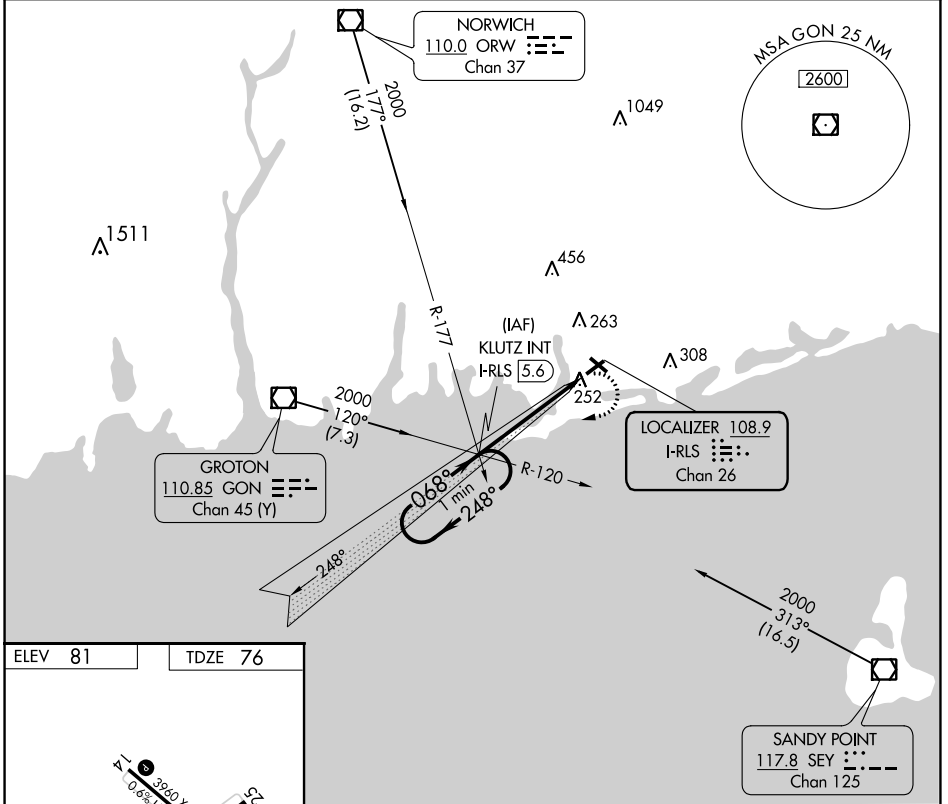


LOC I-RLS <b>108.9</b> Chan 26	APP CRS <b>068°</b>	Rwy Idg TDZE Apt Elev	<b>4010</b> <b>76</b> <b>81</b>
--------------------------------------	------------------------	-----------------------------	---------------------------------------

**LOC RWY 7**  
WESTERLY STATE (WST)

<p>▼ Inoperative table does not apply. ▲ NA Rwy 7 Straight-in and Circling and Circling Rwy 14 and 32 NA at night.</p>	<p>MALSF</p>	<p>MISSED APPROACH: Climbing right turn to 2000 via I-RLS SW course to KLUTZ INT/I-RLS 5.6 DME and hold.</p>
--	--------------	--

ASOS <b>132.375</b>	PROVIDENCE APP CON * <b>119.45 319.2</b>	UNICOM <b>123.0 (CTAF) 0</b>
------------------------	---	---------------------------------



NE-1, 25 FEB 2021 to 25 MAR 2021

NE-1, 25 FEB 2021 to 25 MAR 2021