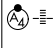


LOC/DME I-RLU 110.5 Chan 42	APP CRS 047°	Rwy Idg 5500 TDZE 309 Apt Elev 333
--	------------------------	---

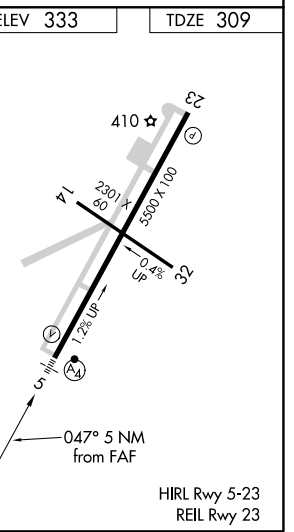
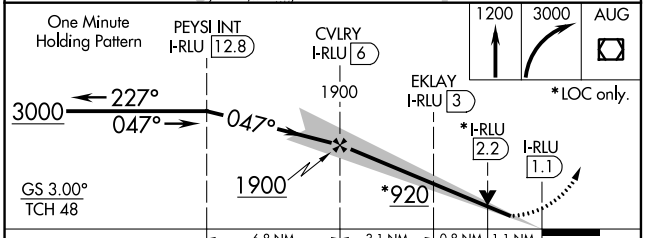
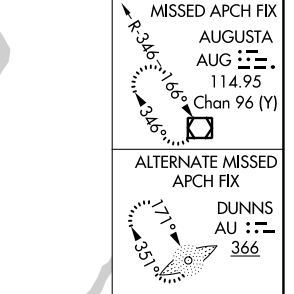
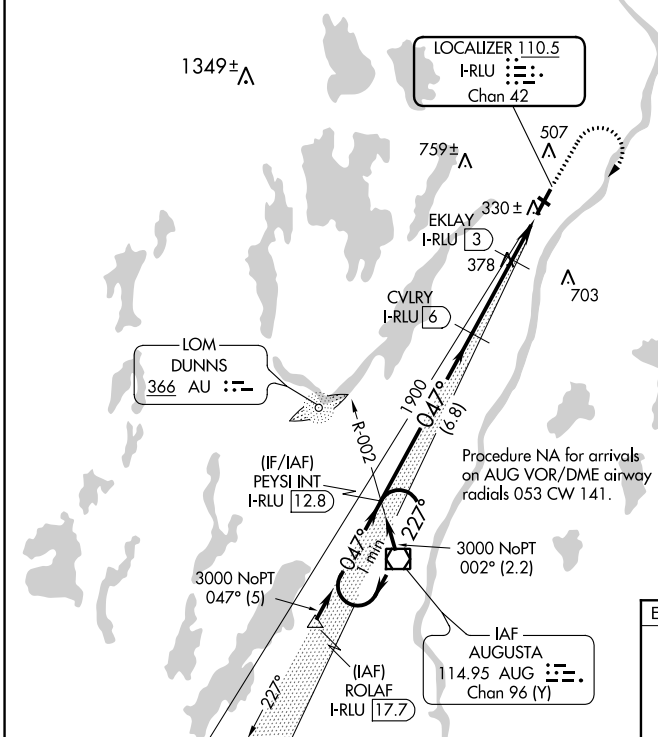
ILS or LOC/DME RWY 5

WATERVILLE ROBERT LAFLEUR (WVL)

⚠ Night landing; Rwy 14 NA. Helicopter visibility reduction below $\frac{3}{4}$ SM NA. VDP NA when using Augusta altimeter setting. When local altimeter setting not received, use Augusta altimeter setting and increase S-ILS 5 DA to 544; increase all MDA 40 feet and S-LOC 5 Cats C/D visibility $\frac{1}{4}$ mile. Inop table does not apply to S-ILS 5. For inop MALSF, increase S-LOC 5 Cat D visibility to 1 mile. For inop MALSF, when using Augusta altimeter setting, increase S-ILS 5 all Cats visibility to $\frac{1}{2}$ mile and S-LOC 5 Cat C/D visibility to $\frac{1}{2}$ mile.

MALSF
 MISSED APPROACH: Climb to 2000 then climbing right turn to 3000 direct AUG VOR/DME and hold.

AWOS-3PT 118.375	PORTLAND APP CON ★ 128.35 299.2	CLNC DEL 124.6 299.2	UNICOM 122.7 (CTAF) 0
----------------------------	---	--------------------------------	---------------------------------



CATEGORY	A	B	C	D
S-ILS 5		509- $\frac{3}{4}$	200 (200- $\frac{3}{4}$)	
S-LOC 5		680- $\frac{3}{4}$	371 (400- $\frac{3}{4}$)	
CIRCLING	860-1	527 (600-1)	860-1 $\frac{1}{2}$ 527 (600-1 $\frac{1}{2}$)	900-2 567 (600-2)

NE-1, 25 FEB 2021 to 25 MAR 2021

NE-1, 25 FEB 2021 to 25 MAR 2021