

WAAS CH <b>72639</b> <b>W04A</b>	APP CRS <b>040°</b>	Rwy Idg <b>4999</b> TDZE <b>900</b> Apt Elev <b>900</b>
--	------------------------	---

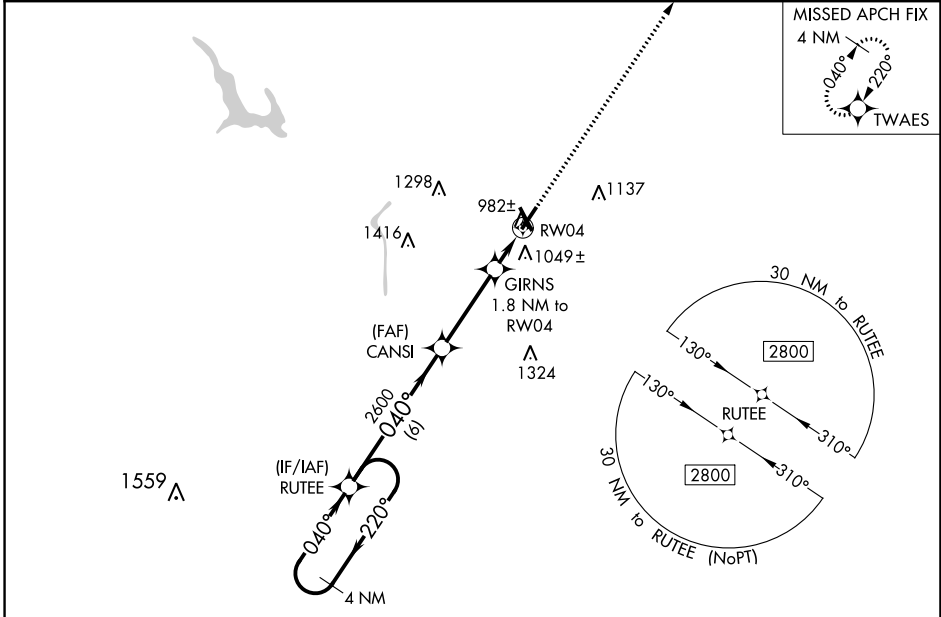
# RNAV (GPS) RWY 4

ZANESVILLE MUNI (ZZV)

**⚠** For uncompensated Baro-VNAV systems, LNAV/VNAV NA below -21°C (-5°F) or above 54°C (130°F). Baro-VNAV and VDP NA when using Newark altimeter setting. DME/DME RNP-0.3 NA. When local altimeter setting not received, use Newark altimeter setting and increase all LPV and LNAV/VNAV DA to 1214 and all visibilities to 1 SM, increase all MDA 80 feet; increase LNAV Cat C/D visibility 1/8 SM and Circling Cat C/D visibility 1/4 SM.

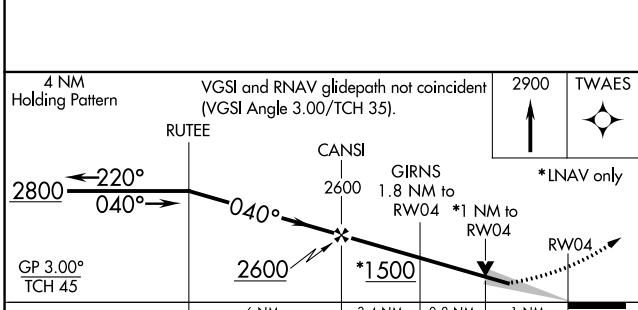
**MISSED APPROACH:**  
Climb to 2900 direct TWAES and hold.

ASOS <b>114.95</b>	INDIANAPOLIS CENTER <b>124.45 370.9</b>	UNICOM <b>123.0 (CTAF) 0*</b>
-----------------------	--	----------------------------------



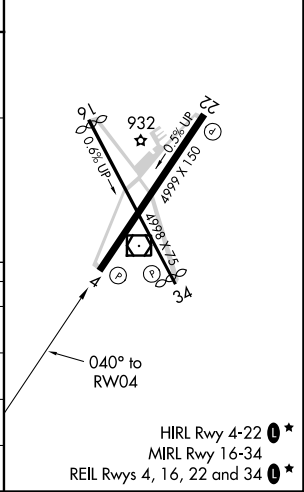
EC-2, 25 FEB 2021 to 25 MAR 2021

EC-2, 25 FEB 2021 to 25 MAR 2021



ELEV 900	TDZE 900
----------	----------

CATEGORY	A	B	C	D
LPV DA		1150-7/8	250 (300-7/8)	
LNAV/VNAV DA		1150-7/8	250 (300-7/8)	
LNAV MDA		1240-1	340 (400-1)	
<b>C</b> CIRCLING	1380-1 480 (500-1)	1400-1 500 (500-1)	1620-2 720 (800-2)	1620-2 1/4 720 (800-2 1/4)



HIRL Rwy 4-22 **0\***  
MIRL Rwy 16-34  
REIL Rws 4, 16, 22 and 34 **0\***