

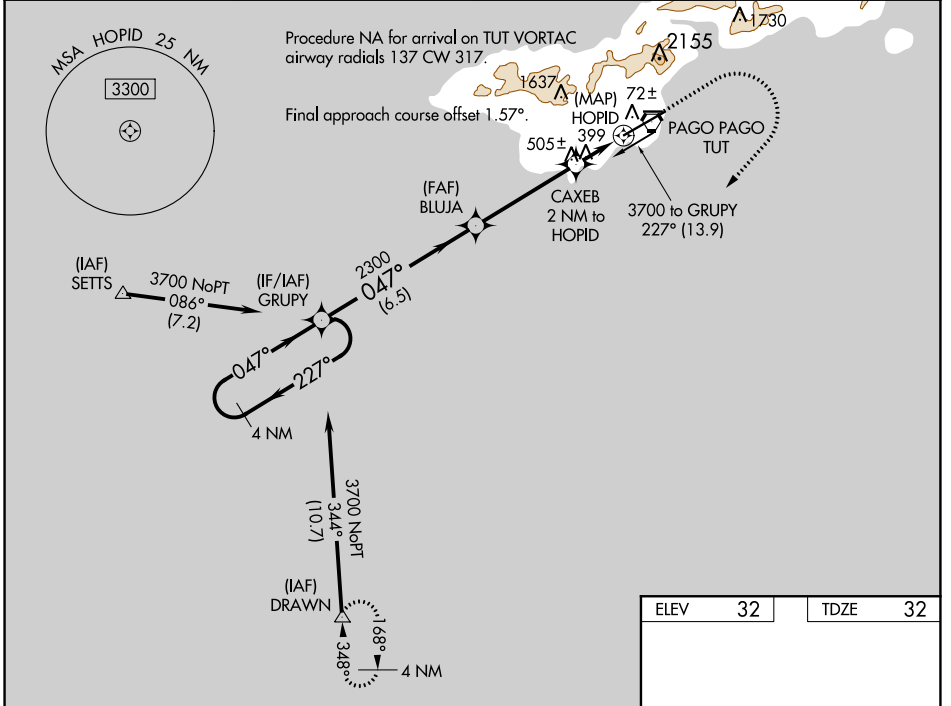
APP CRS	Rwy ldg	<b>8999</b>
<b>047°</b>	TDZE	<b>32</b>
	Apt Elev	<b>32</b>

# RNAV (GPS) RWY 5

PAGO PAGO INTL (PPG) (NSTU)

RNP APCH.	MALSR	MISSED APPROACH: (Maintain 185 K max until 760) Climb to 760 then climbing right turn to 4000 direct DRAWN and hold.
<p><b>▼</b> For uncompensated Baro-VNAV systems, LNAV/VNAV NA below 22°C or above 54°C.</p> <p><b>▲</b> When local altimeter setting not received, procedure NA. Circling NA northwest of Rwy 5-23. Rwy 5 helicopter visibility reduction below 3/4 SM NA. Inop table does not apply to LNAV Cats A/B. For inop ALS, increase LNAV/VNAV all Cats visibility to 1 1/2 SM and LNAV Cats C/D visibility to 2 SM.</p>		

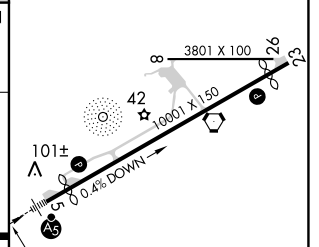
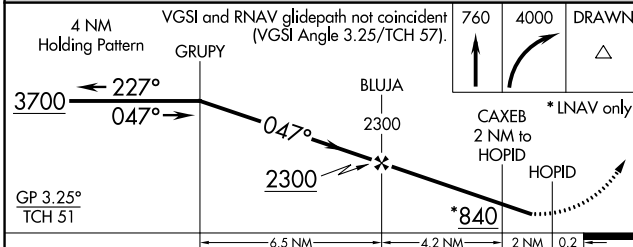
AWOS-3PT <b>127.925</b>	FALEOLO APP CON <b>118.1 6.553(HF)</b>	CTAF <b>122.9</b>	<b>118.3 0</b>
----------------------------	---	----------------------	----------------



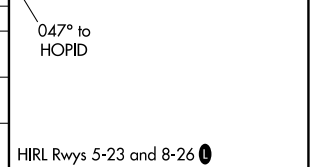
PAC, 25 FEB 2021 to 22 APR 2021

PAC, 25 FEB 2021 to 22 APR 2021

ELEV	<b>32</b>	TDZE	<b>32</b>
------	-----------	------	-----------



CATEGORY	A	B	C	D
LNAV/VNAV DA	551-1		519 (600-1)	
LNAV MDA	760-1	728 (800-1)	760-1 5/8	728 (800-1 5/8)
<b>C</b> CIRCLING	760-1	728 (800-1)	820-2 1/4 788 (800-2 1/4)	860-2 3/4 828 (900-2 3/4)



HIRL Rwy 5-23 and 8-26 **0**