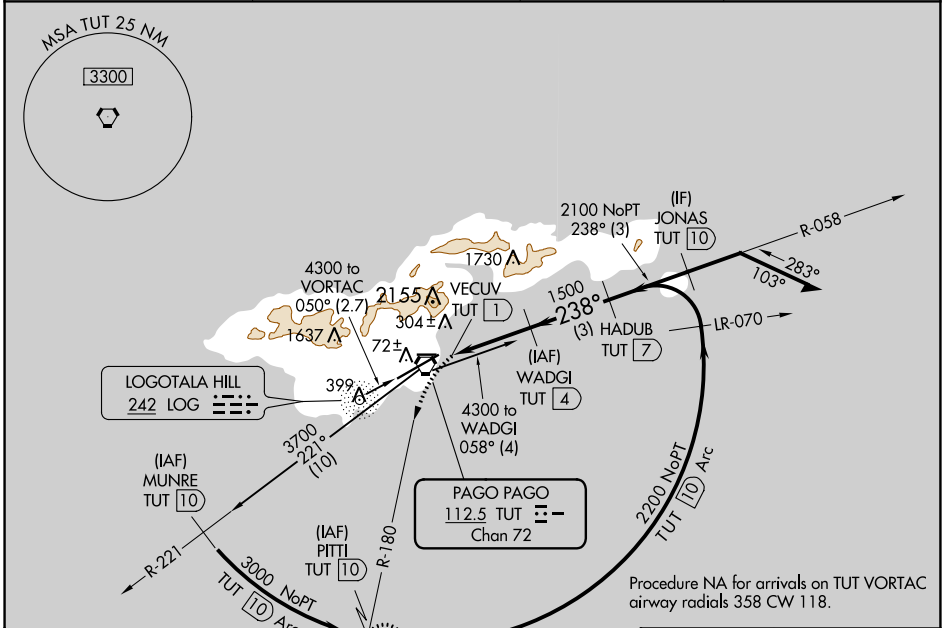


VORTAC TUT 112.5 Chan 72	APP CRS 238°	Rwy Idg TDZE Apt Elev	N/A N/A 32
---------------------------------------	------------------------	-----------------------------	---------------------------------------

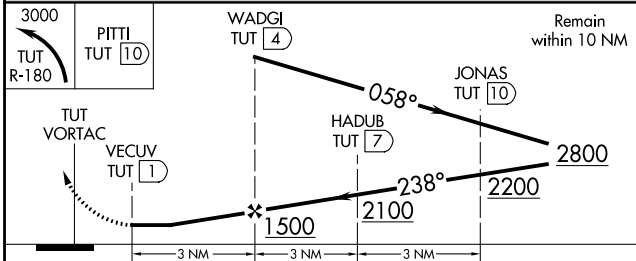
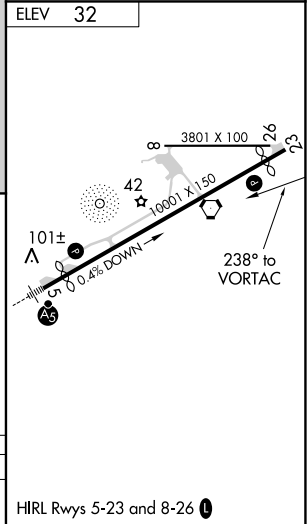
VOR or TACAN-B
PAGO PAGO INTL (PPG) (NSTU)

DME required.		MISSED APPROACH: Climbing left turn to 3000 on TUT VORTAC R-180 to PITTI/10 DME and hold, continue climb-in-hold to 3000.	
When local alimeter setting not received, procedure NA. Circling NA northwest of Rwy 5-23.			

AWOS-3PT 127.925	FALEOLO APP CON 118.1 6.553(HF)	CTAF 122.9	118.3 0
----------------------------	---	----------------------	----------------



Procedure NA for arrivals on TUT VORTAC airway radials 358 CW 118.



CATEGORY	A	B	C	D
C CIRCLING	560-1 528 (600-1)	700-1 668 (700-1)	820-2¼ 788 (800-2¼)	860-2¾ 828 (900-2¾)

PAC, 25 FEB 2021 to 22 APR 2021

PAC, 25 FEB 2021 to 22 APR 2021