

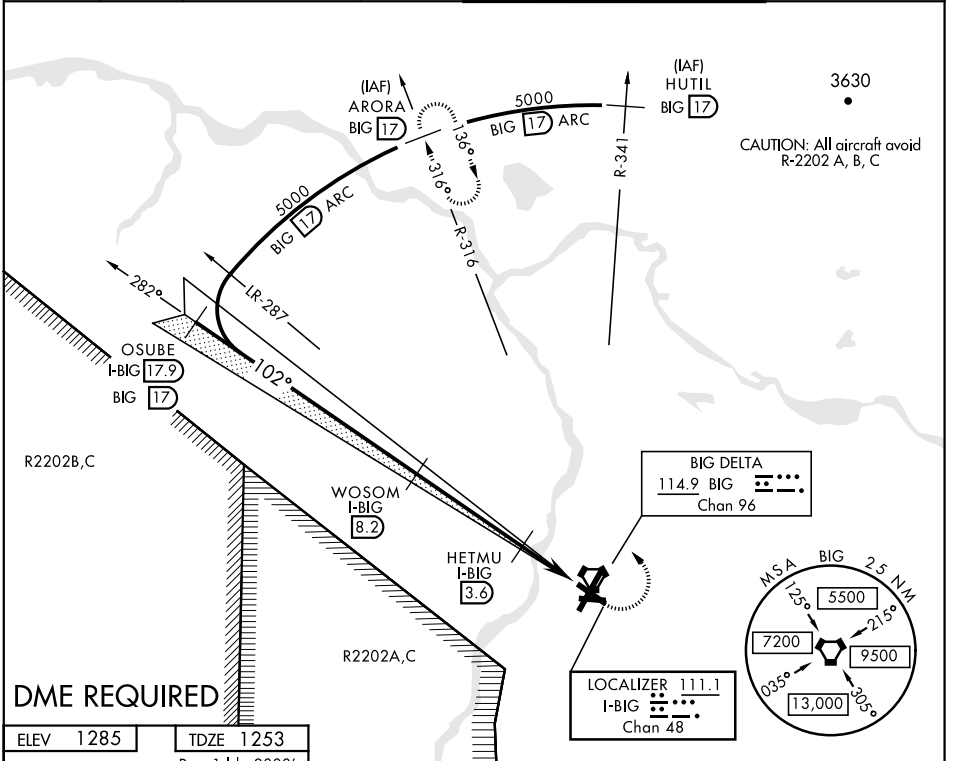
DELTA JUNCTION/FORT GREELY, ALASKA

ILS or LOC/DME RWY 10

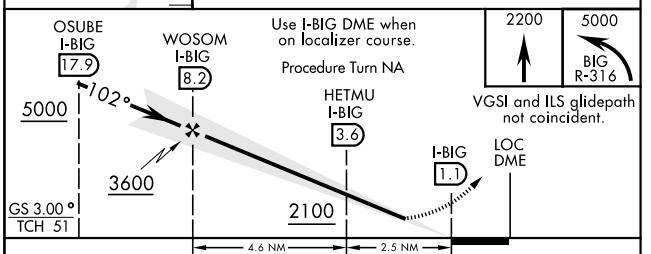
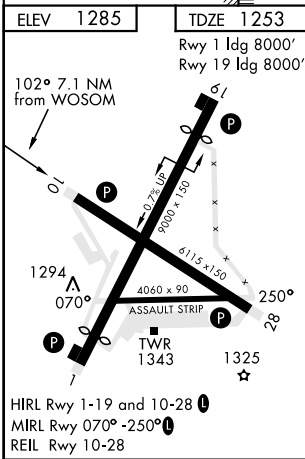
LOC/DME I-BIG 111.1 Chan 48	APCH CRS 102°	Rwy Ldg TDZE 1253 Arprt Elev 1285	AL-1218 [USA]	ALLEN AAF (PABI)
---	-------------------------	--	---------------	------------------

⚠ * Circling not authorized East of Rwy 1-19.
⚠ MISSED APPROACH: Climb to 2200 then climbing left turn to 5000 via BIG R-316 to ARORA/BIG 17 DME and hold.

ATIS 132.075	ASOS 135.65	ANCHORAGE CENTER 135.3 322.5	CTAF 122.9	ALLEN TOWER ★ 119.8 235.775 40.8 (E) FM	GND CON 118.225 251.05
------------------------	-----------------------	--	----------------------	---	----------------------------------



DME REQUIRED



CATEGORY	A	B	C	D
S-ILS 10		1453- $\frac{3}{4}$	200 (200- $\frac{3}{4}$)	
S-LOC 10		1560-1	307 (300-1)	
CIRCLING *	1720-1 435 (500-1)	1760-1 475 (500-1)	1760-1 $\frac{1}{2}$ 475 (500-1 $\frac{1}{2}$)	1860-2 575 (600-2)

DELTA JUNCTION/FORT GREELY, ALASKA 64°00'N-145°43'W ALLEN AAF (PABI)

Orig D 05DEC19

ILS or LOC/DME RWY 10

AK, 25 FEB 2021 to 22 APR 2021

AK, 25 FEB 2021 to 22 APR 2021