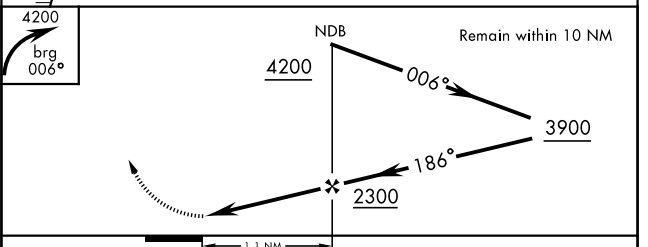
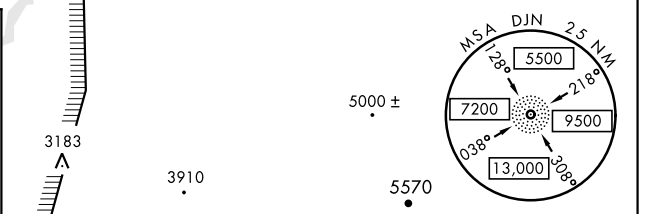
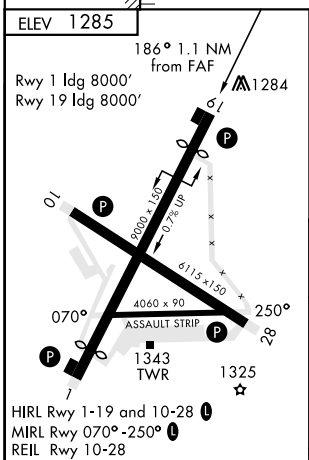
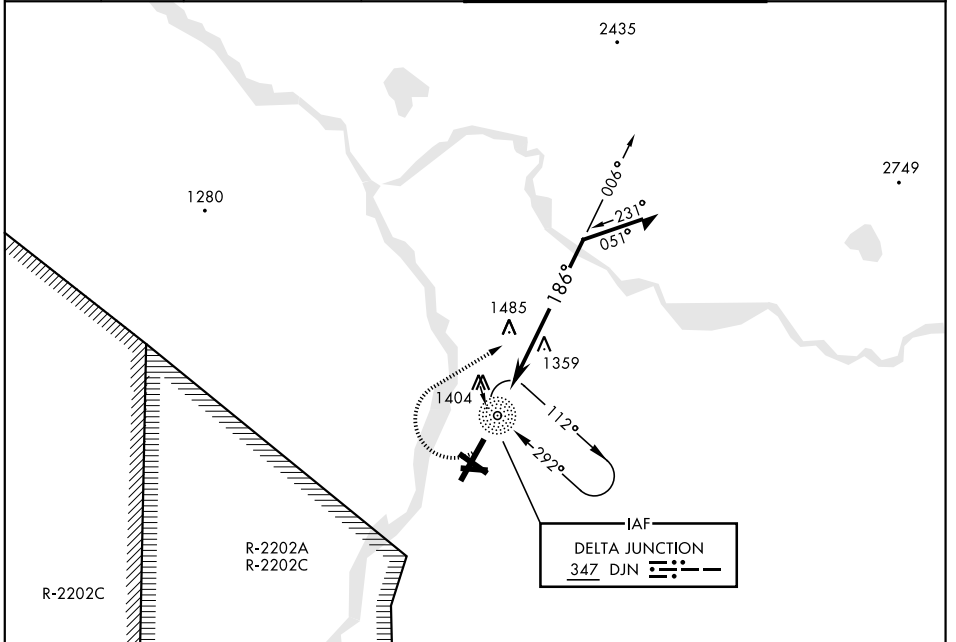


NDB DJN 347	APCH CRS 186°	Rwy Idg TDZE Arprt Elev N/A N/A 1285	AL-1218 [USA]	ALLEN AAF (PABI)
-----------------------	-------------------------	---	---------------	------------------

*Circling not authorized East of Rwy 1-19.

 MISSED APPROACH: Climbing right turn to 4200 via 006° bearing from DJN NDB, then right turn direct DJN NDB and hold.

ATIS 132.075	ASOS 135.65	ANCHORAGE CENTER 135.3 322.5	CTAF 122.9	ALLEN TOWER ★ 119.8 235.775 40.8 (E) FM	GND CON 118.225 251.05
------------------------	-----------------------	--	----------------------	---	----------------------------------



FAF to MAP 1.1 NM					CATEGORY	A	B	C	D
Knots	60	90	120	150	180	1880-1	595 (600-1)	1880-1½ 595 (600-1½)	1900-2 615 (700-2)
Min:Sec	1:06	0:44	0:33	0:26	0:22	CIRCLING *			

AK, 25 FEB 2021 to 22 APR 2021

AK, 25 FEB 2021 to 22 APR 2021