

DELTA JUNCTION/FORT GREELY, ALASKA

RNAV (GPS) RWY 19

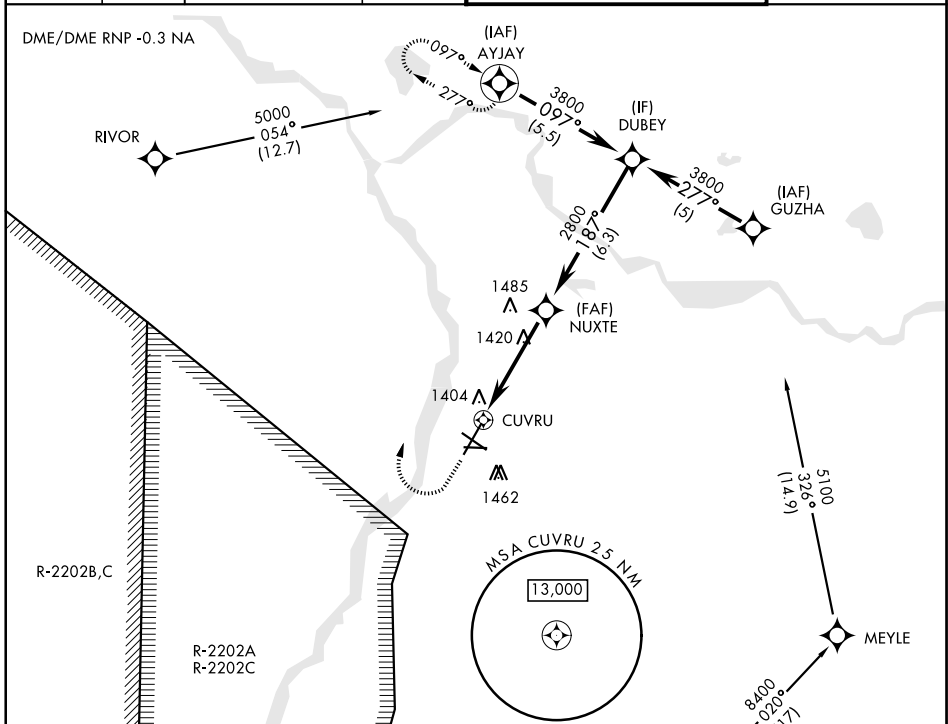
APCH CRS	Rwy ldg	8000
187°	TDZE	1239
	Arpt Elev	1285

AL-1218 [USA]

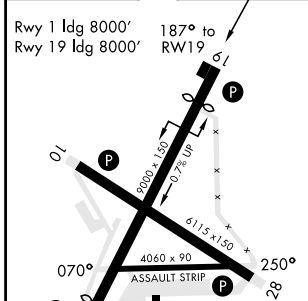
ALLEN AAF (PABI)

* Circling not authorized East of Rwy 1-19. MISSED APPROACH: Climbing right turn to 5000, direct AYJAY and hold.

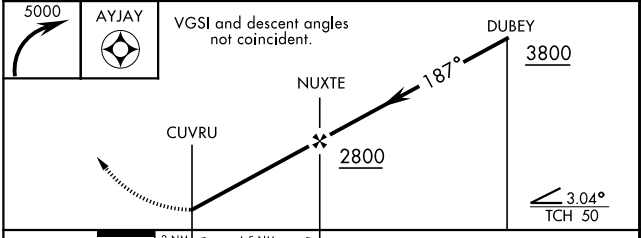
ATIS	ASOS	ANCHORAGE CENTER	CTAF	ALLEN TOWER *	GND CON
132.075	135.65	135.3 322.5	122.9	119.8 235.775 40.8 (E) FM	118.225 251.05



ELEV	1285	TDZE	1239
------	------	------	------



HIRL Rwy 1-19 and 10-28	Ⓛ
MIRL Rwy 070°-250°	Ⓛ
REIL Rwy 10-28	



CATEGORY	A	B	C	D
LNAV MDA	1720-1 481 (500-1)	1720-1 1/4 481 (500-1 1/4)	1720-1 1/2 481 (500-1 1/2)	1720-2 481 (500-2)
CIRCLING *	1720-1 435 (500-1)	1760-1 475 (500-1)	1760-1 1/2 475 (500-1 1/2)	1860-2 575 (600-2)

DELTA JUNCTION/FORT GREELY, ALASKA

64°00'N-145°43'W

ALLEN AAF (PABI)

Orig B 05DEC19

RNAV (GPS) RWY 19

AK, 25 FEB 2021 to 22 APR 2021

AK, 25 FEB 2021 to 22 APR 2021