

# RNAV (GPS) RWY 7

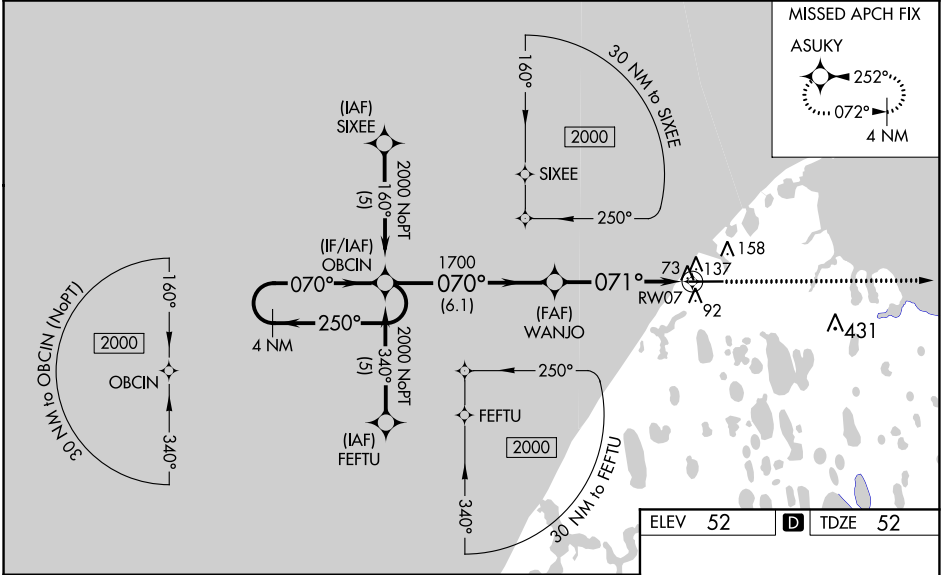
WILEY POST-WILL ROGERS MEMORIAL (BRW)(PABR)

WAAS CH <b>86915</b> <b>W07A</b>	APP CRS <b>071°</b>	Rwy Idg 5900
		TDZE 52
		Apt Elev 52

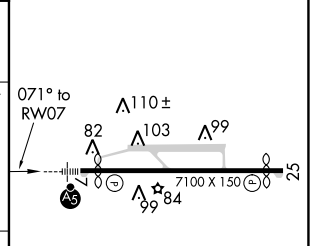
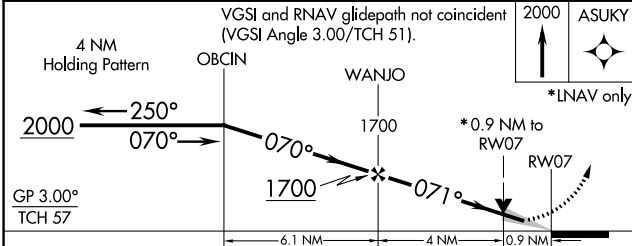
**⚠** DME/DME RNP-0.3 NA. Inoperative table does not apply to LPV all Cats. For inoperative MALSR, increase LNAV/VNAV all Cats visibility to RVR 4500. When local altimeter setting not received, use Atkasuk altimeter setting, increase all DA 124 feet, LPV all Cats visibility ¼ mile, LNAV/VNAV all Cats visibility ½ mile, increase all MDA 140 feet and LNAV Cat C/D visibilities ½ mile, and Circling Cat C/D visibilities ¼ mile. For inoperative MALSR when using Atkasuk altimeter setting, increase LNAV/VNAV all Cats and LNAV Cat C/D visibilities to 1 ¾ mile. For uncompensated Baro-VNAV systems, LNAV/VNAV NA below -25°C (-13°F) or above 48°C (118°F). VDP and Baro-VNAV NA when using Atkasuk altimeter setting. Circling NA for Cat A north of Rwy 7-25.

**MALSR**  
MISSED APPROACH:  
Climb to 2000 direct ASUKY and hold.

AFIS <b>132.15</b>	ANCHORAGE CENTER <b>135.3 239.25</b>	BARROW RADIO <b>123.6 (CTAF)</b>
-----------------------	---	-------------------------------------



ELEV 52	<b>D</b>	TDZE 52
---------	----------	---------



CATEGORY	A	B	C	D
LPV DA		302/40	250 (300-¾)	
LNAV/VNAV DA		350/40	298 (300-¾)	
LNAV MDA		400/40	348 (400-¾)	
CIRCLING	420-1 368 (400-1)	520-1 468 (500-1)	520-1½ 468 (500-1½)	620-2 568 (600-2)

REIL Rwy 25  
HIRL Rwy 7-25

# RNAV (GPS) RWY 7

AK, 25 FEB 2021 to 22 APR 2021

AK, 25 FEB 2021 to 22 APR 2021