

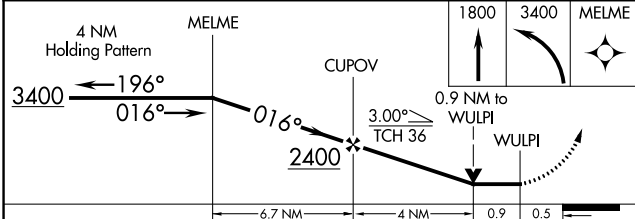
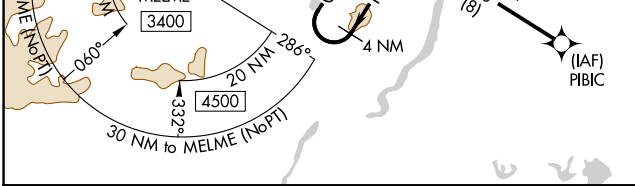
RNAV (GPS) RWY 2

BETTLES(BTT)(PABT)

APP CRS	Rwy Idg	5190
016°	TDZE	642
	Apt Elev	647

RNP APCH.	MALSRL	MISSED APPROACH: (Do not exceed 230K until MELME) Climb to 1800 then climbing left turn to 3400 direct MELME and hold.
<p>⚠ Inoperative table does not apply. Circling NA east of Rwy 2-20.</p> <p>⚠ For inop ALS, increase Cat C/D visibility to 1 3/4 SM. Rwy 2 helicopter visibility reduction below 3/4 SM NA.</p> <p>⚠ -45°C</p>		

ASOS 135.45	ANCHORAGE CENTER 124.6 352.0	FAIRBANKS RADIO 122.2	CTAF 122.9
-----------------------	--	---------------------------------	----------------------



ELEV 647	TDZE 642
MIRL Rwy 2-20	

CATEGORY	A	B	C	D
LNVA MDA	1100-1 458 (500-1)			
CIRCLING	1100-1 453 (500-1)	1320-2 673 (700-2)	1320-2 1/4 673 (700-2 1/4)	

AK, 25 FEB 2021 to 22 APR 2021

AK, 25 FEB 2021 to 22 APR 2021