


LOC I-CDB <b>110.3</b>	APP CRS <b>146°</b>	Rwy Idg <b>10179</b> TDZE <b>75</b> Apt Elev <b>100</b>
---------------------------	------------------------	---

# ILS or LOC RWY 15

COLD BAY (CDB) (PACD)

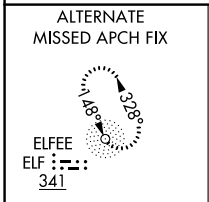
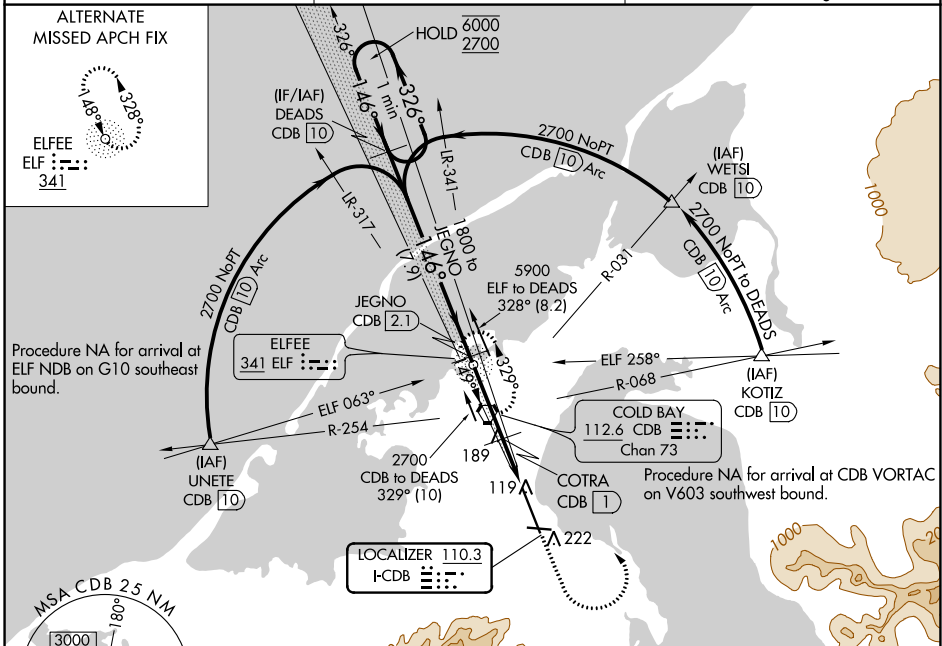
DME required.

⚠ Circling NA for Cats B/C/D southwest of Rwy 15-33. DME from CDB VORTAC.  
 ⚠ Simultaneous reception of I-CDB and CDB DME required. DME values will decrease then increase prior to reaching missed approach point. Circling NA for Cat A southwest of Rwy 15-33 at night. For inop ALS, increase S-LOC 15 Cats C and D visibility to RVR 5500.  
 #RVR 1800 authorized with use of FD or AP or HUD to DA.

MALSR 

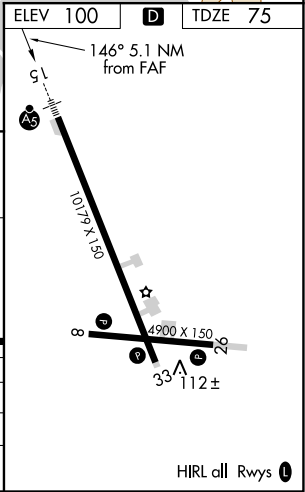
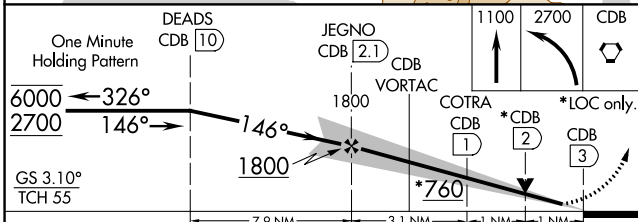
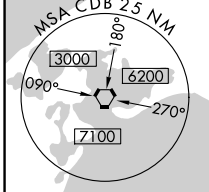
MISSED APPROACH: Climb to 1100 then climbing left turn to 2700 direct CDB VORTAC and hold, continue climb-in-hold to 2700.


ASOS <b>135.75</b>	ANCHORAGE CENTER <b>118.5 278.3</b>	COLD BAY RADIO <b>123.6 (CTAF)</b> 
-----------------------	--	---



Procedure NA for arrival at ELF NDB on G10 southeast bound.

Procedure NA for arrival at CDB VORTAC on V603 southwest bound.



CATEGORY	A	B	C	D
S-ILS 15#	275/24		200 (200-½)	
S-LOC 15	440/24	365 (400-½)	440/35	365 (400-¾)
 CIRCLING	540-1	560-1	560-1½	860-2½
	440 (500-1)	460 (500-1)	460 (500-1½)	760 (800-2½)

HIRL all Rwys 

AK, 25 FEB 2021 to 22 APR 2021

AK, 25 FEB 2021 to 22 APR 2021