

| | | |
|---------------------------|------------------------|---|
| LOC I-CDB 110.3 | APP CRS 326° | Rwy Idg 10179 TDZE 93 Apt Elev 100 |
|---------------------------|------------------------|---|

LOC BC RWY 33

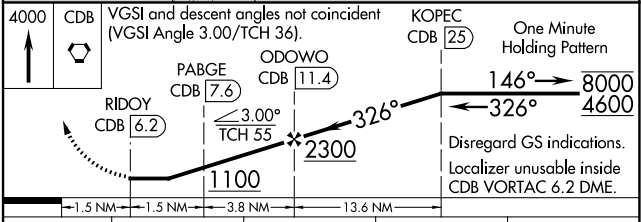
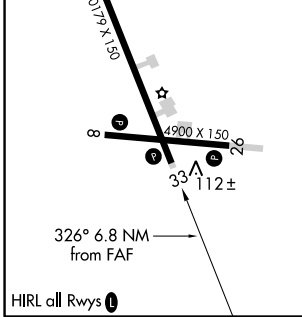
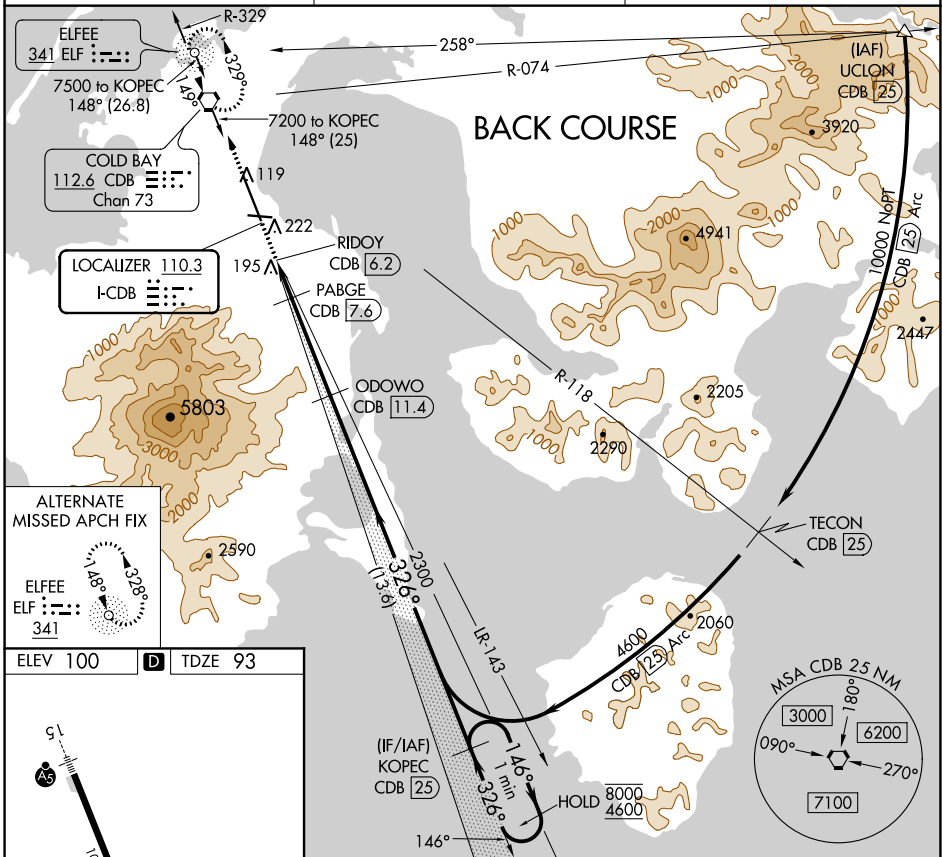
COLD BAY (CDB) (PACD)

DME required.

⚠ Circling NA for Cat A southwest of Rwy 15-33 at night. DME from CDB VORTAC.
 ⚠ Simultaneous reception of I-CDB and CDB DME required. Circling NA for Cats B/C/D southwest of Rwy 15-33.

MISSED APPROACH: Climb to 4000 direct CDB VORTAC and hold, continue climb-in-hold to 4000.

| | | |
|-----------------------|--|---|
| ASOS 135.75 | ANCHORAGE CENTER 118.5 278.3 | COLD BAY RADIO 123.6 (CTAF) 0 |
|-----------------------|--|---|



| | | | | |
|--|---------------------------|-----------|--------------|------------------------------|
| CATEGORY | A | B | C | D |
| S-33 | | 420-1 7/8 | 327 (400-1%) | |
| <input checked="" type="checkbox"/> CIRCLING | 540-1 7/8 440 (500-1%) | 560-1 7/8 | 460 (500-1%) | 860-2 1/2 760 (800-2 1/2) |

AK, 25 FEB 2021 to 22 APR 2021

AK, 25 FEB 2021 to 22 APR 2021