

APP CRS 216°	Rwy Idg TDZE Apt Elev	3500 545 549
------------------------	-----------------------------	---

RNAV (GPS) RWY 22

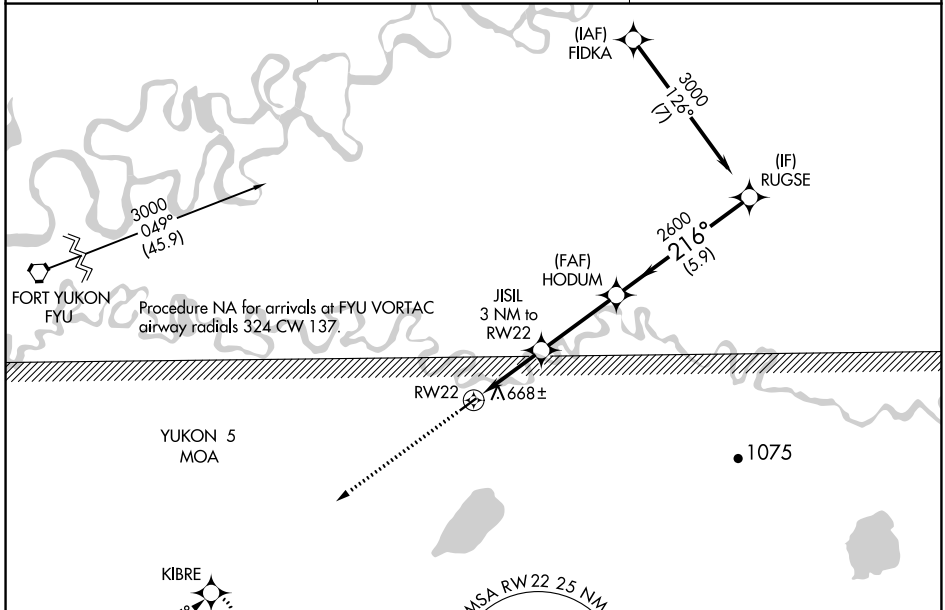
CHALKYITSIK (CIK) (PACI)

RNP APCH.

▼ Procedure NA at night.
▲ NA Rwy 22 helicopter visibility reduction below 1 SM NA.
❄ -32°C Use Fort Yukon altimeter setting.

MISSED APPROACH: Climb to 3000 direct KIBRE and hold.

FYU/PFYU AWOS-3P 125.8	ANCHORAGE CENTER 135.0 225.4	CTAF 122.9
----------------------------------	--	----------------------

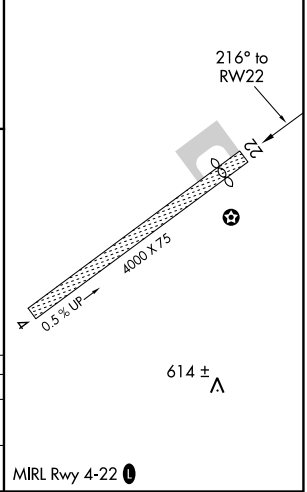


AK, 25 FEB 2021 to 22 APR 2021

AK, 25 FEB 2021 to 22 APR 2021



ELEV 549	TDZE 545
----------	----------



3000	KIBRE	
HODUM	RUGSE	
JISIL 3 NM to RW22	3000	
2600		
1540		
3 NM	3.3 NM	5.9 NM

CATEGORY	A	B	C	D
LNVA MDA	1020-1	475 (500-1)	1020-1 ³ / ₈	475 (500-1 ³ / ₈)
C CIRCLING	1080-1 531 (600-1)	1160-1 611 (700-1)	1200-1 ³ / ₄ 651 (700-1 ³ / ₄)	1360-2 ³ / ₄ 811 (900-2 ³ / ₄)