

APP CRS <b>101°</b>	Rwy Idg <b>3001</b>
	TDZE <b>14</b>
	Apt Elev <b>14</b>

# RNAV (GPS) RWY 10

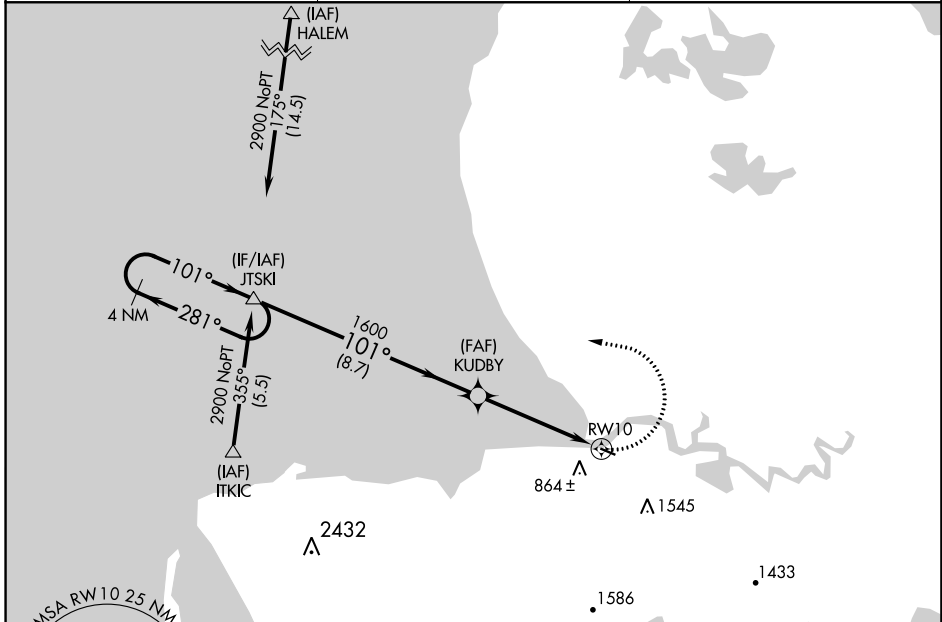
SCAMMON BAY (SCM) (PACM)

**⚠** Circling NA south of Rwy 10-28. DME/DME RNP-0.3 NA. Visibility reduction by helicopters NA. VDP NA when using Hooper Bay altimeter setting. When local altimeter setting not received, use Hooper Bay altimeter setting and increase all MDA 360 feet.

**❄** -21°C

MISSED APPROACH: Climbing left turn to 2900 direct JTSKI and hold.

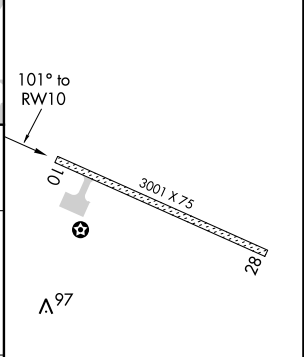
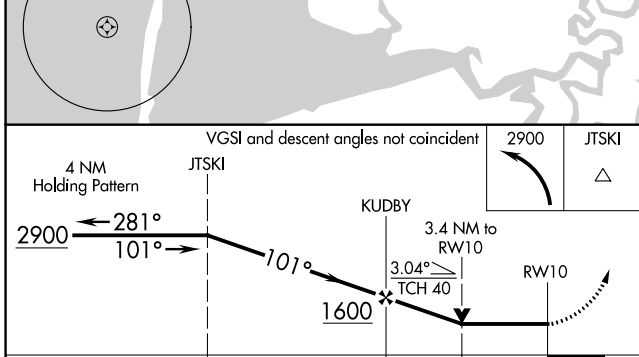
AWOS-3P <b>118.425</b>	ANCHORAGE CENTER <b>124.5</b>	UNICOM <b>123.0 (CTAF) 0</b>
---------------------------	----------------------------------	---------------------------------



AK, 25 FEB 2021 to 22 APR 2021

AK, 25 FEB 2021 to 22 APR 2021

ELEV 14	TDZE 14
---------	---------



CATEGORY	A	B	C	D
LNVA MDA	1100-1¼ 1086 (1100-1¼)	1100-1½ 1086 (1100-1½)		NA
CIRCLING	1100-1¼ 1086 (1100-1¼)	1100-1½ 1086 (1100-1½)		NA

MIRL Rwy 10-28 0