

WAAS CH 42529 W28A	APP CRS 267°	Rwy Idg TDZE Apt Elev	3001 14 14
--	------------------------	-----------------------------	---------------------------------------

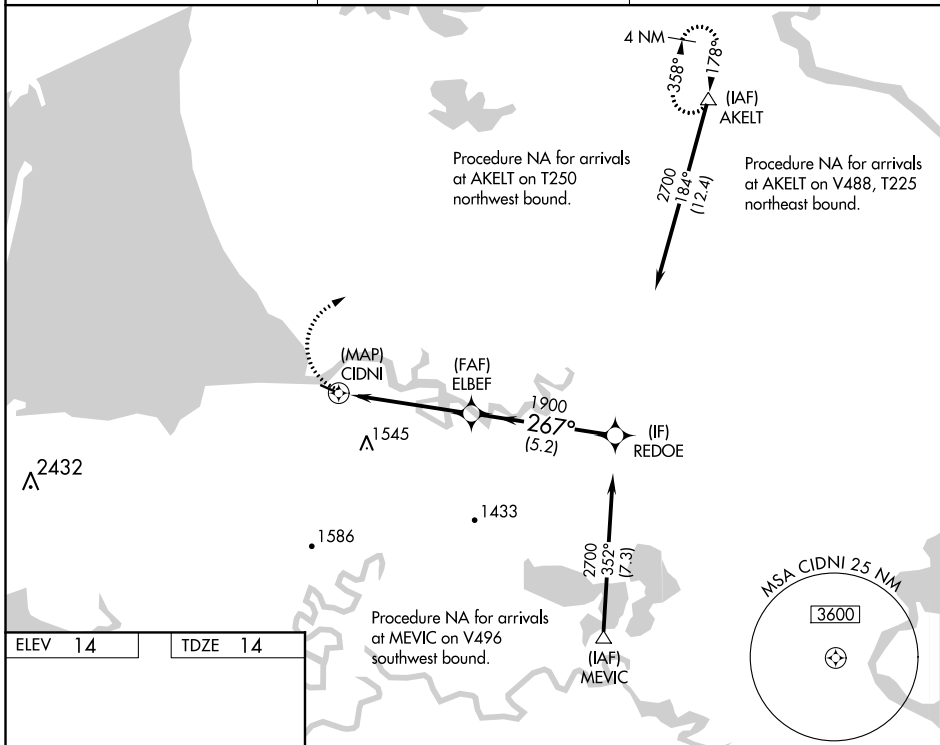
RNAV (GPS) RWY 28

SCAMMON BAY (SCM) (PACM)

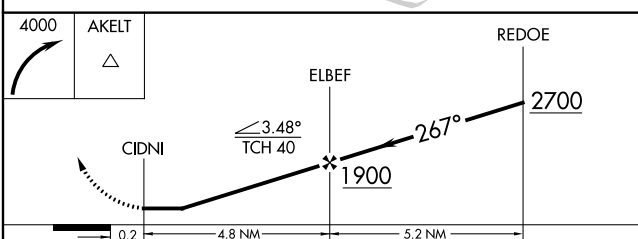
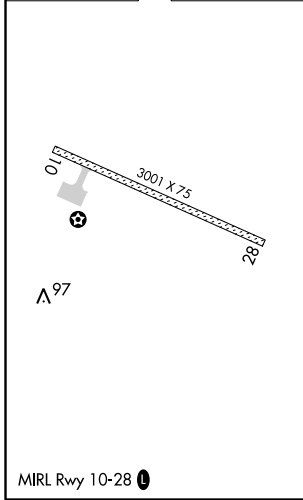
⚠ When local altimeter setting not received, use Hooper Bay altimeter setting and increase all MDA 360 feet increase LP Cat B visibility ¼ mile. Circling NA south of Rwy 10-28. DME/DME RNP-0.3 NA. Procedure NA at night. Helicopter visibility reduction below 1 SM NA.

⚠ MISSED APPROACH: Climbing right turn to 4000 direct AKELT and hold.

AWOS-3P 118,425	ANCHORAGE CENTER 124.5	UNICOM 123.0 (CTAF) 0
---------------------------	----------------------------------	---------------------------------



ELEV 14	TDZE 14
---------	---------



CATEGORY		A	B	C	D
LP	MDA	900-1¼	886 (900-1¼)	NA	
LNAV	MDA	1060-1¼ 1046 (1100-1¼)	1060-1½ 1046 (1100-1½)	NA	
CIRCLING		1060-1¼ 1046 (1100-1¼)	1060-1½ 1046 (1100-1½)	NA	

AK, 25 FEB 2021 to 22 APR 2021

AK, 25 FEB 2021 to 22 APR 2021