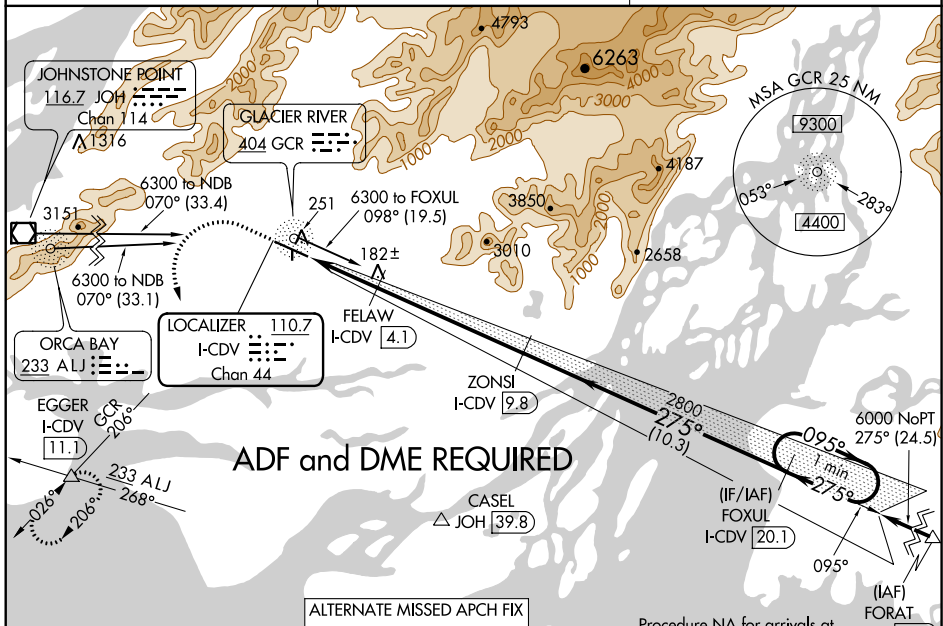


LOC/DME I-CDV 110.7 Chan 44	APP CRS 275°	Rwy Idg TDZE Apt Elev 7500 53 54
--	------------------------	--

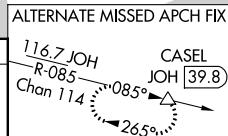
ILS or LOC RWY 27
MERLE K (MUDHOLE) SMITH (CDV) (PACV)

<p>ADF required. DME required. Circling NA north of Rwy 9-27. Circling to Rwy 16/34 NA at night.</p>	<p>MALS R</p>	<p>MISSED APPROACH: Climb to 700 then climbing left turn to 5000 on heading 180° and GCR NDB bearing 206° to EGGER INT/I-CDV 11.1 DME and hold, continue climb-in-hold to 5000.</p>

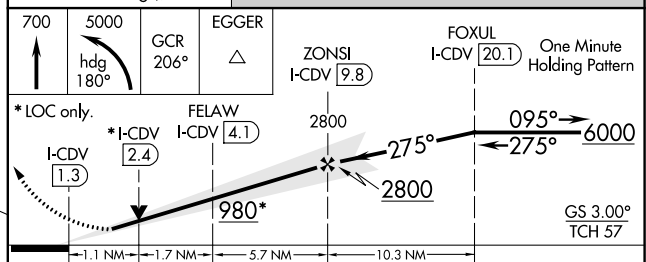
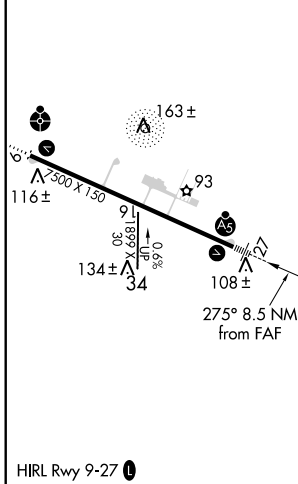
ASOS 134.8	ANCHORAGE CENTER 119.3 133.6 269.4	JUNEAU RADIO 122.2 123.6 (CTAF) 0
----------------------	--	---



ELEV 54	D	TDZE 53
---------	----------	---------



Procedure NA for arrivals at FORAT on V319 eastbound.



CATEGORY	A	B	C	D
S-ILS 27	303/24 250 (300-1/2)			
S-LOC 27	440/24	387 (400-1/2)	440/35	387 (400-5/8)
CIRCLING	460-1	520-1	520-1 1/2	620-2
	406 (500-1)	466 (500-1)	466 (500-1 1/2)	566 (600-2)

AK, 25 FEB 2021 to 22 APR 2021

AK, 25 FEB 2021 to 22 APR 2021