


WAAS CH <b>82031</b> <b>W27A</b>	APP CRS <b>275°</b>	Rwy Idg TDZE <b>53</b> Apt Elev <b>54</b>	<b>7500</b>
--	------------------------	---	-------------

# RNAV (GPS) RWY 27

MERLE K (MUDHOLE) SMITH (CDV)(PACV)

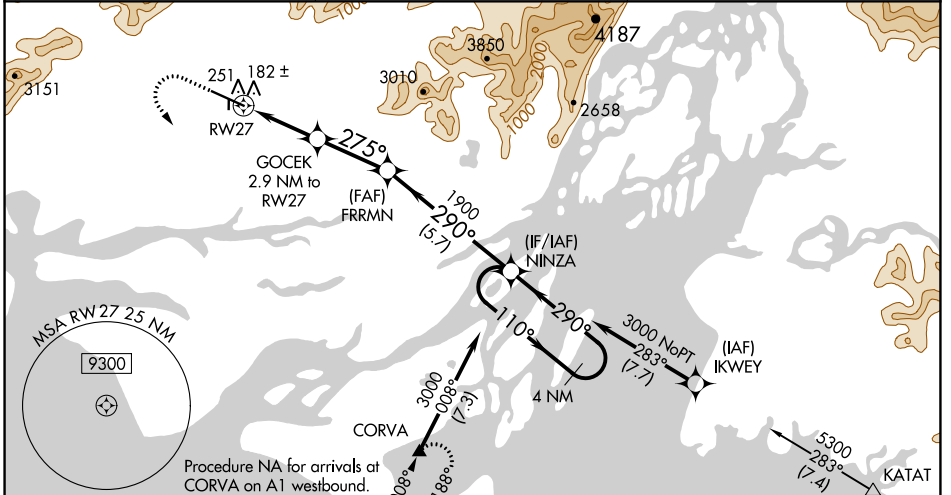
**Baro-VNAV NA.** DME/DME RNP-0.3 NA. VDP NA with Valdez altimeter setting. For inoperative MALS, increase LPV all Cats visibility to RVR 4500, LNAV/VNAV all Cats visibility to 1½, LNAV Cats A/B visibility to RVR 5500, Cats C/D visibility to RVR 6000. When local altimeter setting not received use Valdez altimeter setting and increase all DA 113 feet and all MDA 120 feet, and increase LPV all Cats visibility to RVR 4000, increase LNAV/VNAV all Cats visibility to 1½, increase LNAV Cats C/D visibility to RVR 5500. For inoperative MALS when using Valdez altimeter setting, increase LPV all Cats visibility to RVR 6000, LNAV Cats A/B visibility to RVR 5500, and LNAV Cats C/D visibility to 1½. Circling to Rwy 16/34 NA at night. Circling NA north of Rwy 9/27.

**MALS**

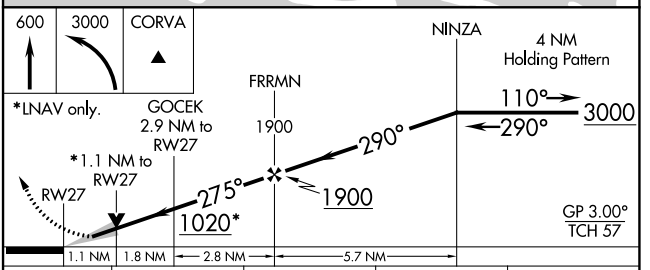
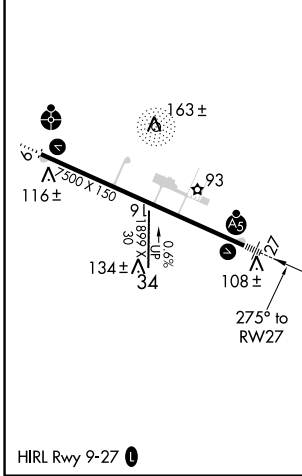


**MISSED APPROACH:**  
Climb to 600 then climbing left turn to 3000 direct CORVA and hold.

ASOS <b>134.8</b>	ANCHORAGE CENTER <b>119.3 133.6 269.4</b>	JUNEAU RADIO <b>122.2 123.6 (CTAF) 1</b>
----------------------	--	---



ELEV 54	<b>D</b>	TDZE 53
---------	----------	---------



CATEGORY	A	B	C	D
LPV DA		328/24	275 (300-½)	
LNAV/VNAV DA		523/56	470 (500-1¼)	
LNAV MDA	460/24	407 (500-½)	460/40	407 (500-¾)
CIRCLING	460-1 406 (500-1)	520-1 466 (500-1)	520-1½ 466 (500-1½)	620-2 566 (600-2)

AK, 25 FEB 2021 to 22 APR 2021

AK, 25 FEB 2021 to 22 APR 2021