

RNAV (GPS) RWY 23

ADAK (ADK)(PADK)

APP CRS	Rwy Idg	6190
234°	TDZE	15
	Apt Elev	18

⚠ Circling not authorized at night.
DME/DME RNP-0.3 NA.

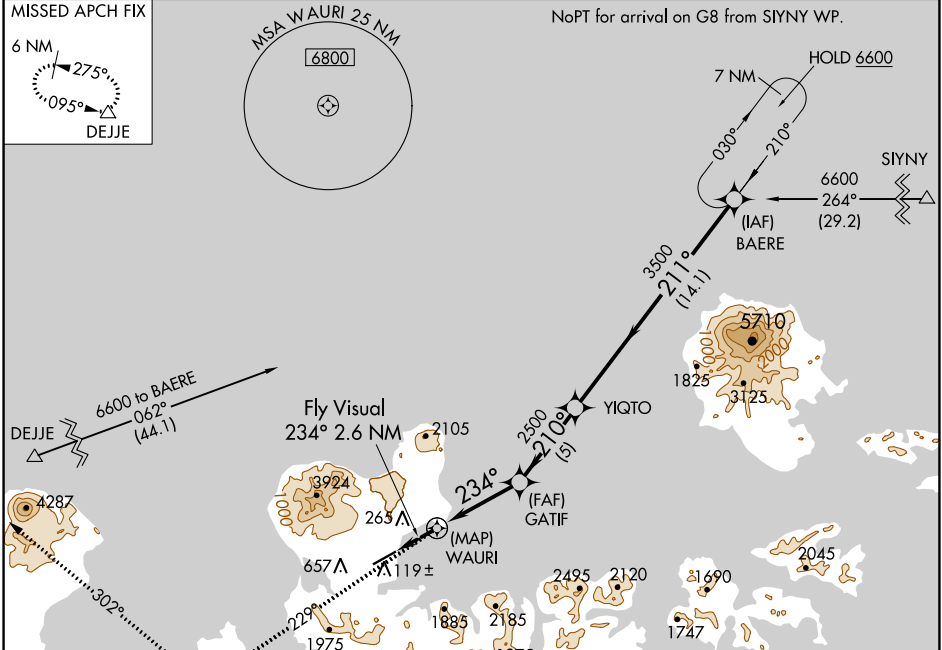
MALS

MISSED APPROACH: Climb to 6600 via 229° course to XERIC, then right turn via 302° course to DEJJE and hold.

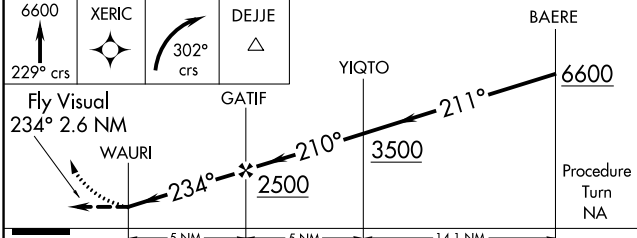
AWOS-3P
134.5

ANCHORAGE CENTER
126.4 254.3

CTAF
122.9



ELEV 18	D TDZE 15
Fly Visual 234° 2.6 NM	



CATEGORY	A	B	C	D
LNVA MDA	1220-3 1205 (1300-3)			
CIRCLING	1220-3 1202 (1300-3)		1540-3 1522 (1600-3)	

ELEV 18 **D** TDZE 15

Fly Visual 234° 2.6 NM

REIL Rwy 23

HIRL Rwy 5-23

AK, 25 FEB 2021 to 22 APR 2021

AK, 25 FEB 2021 to 22 APR 2021