

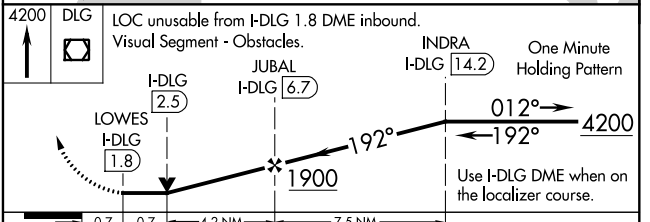
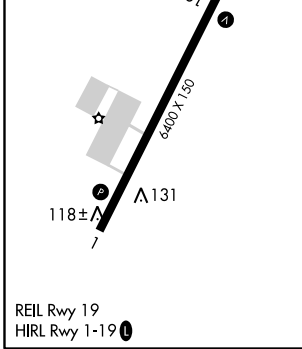
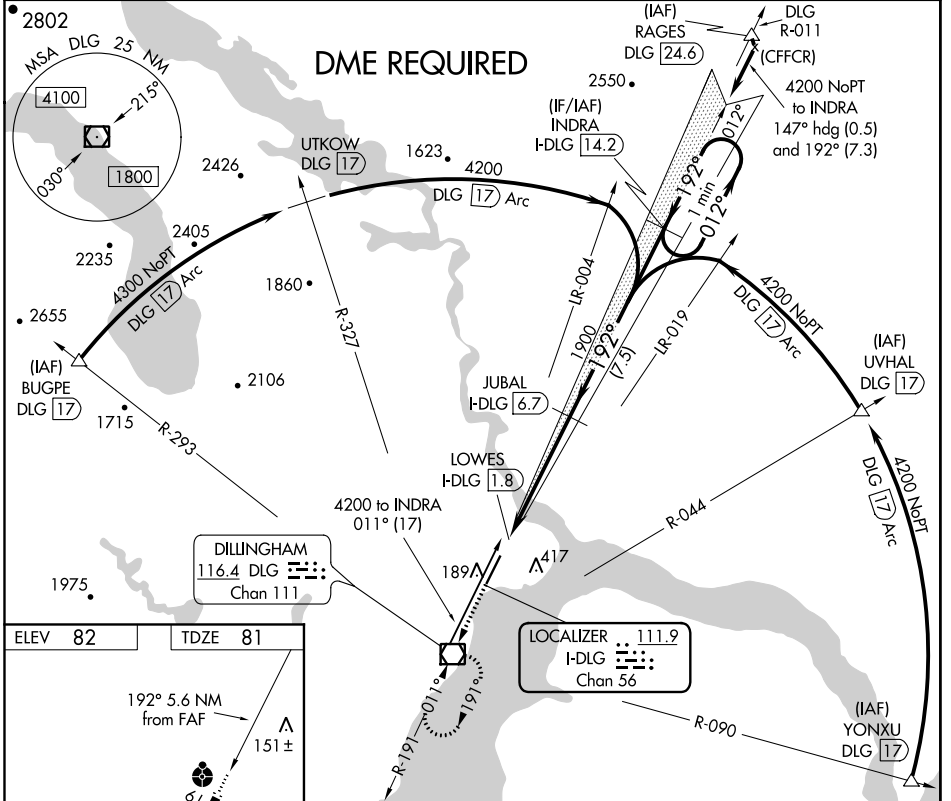
LOC/DME I-DLG 111.9 Chan 56	APP CRS 192°	Rwy Idg 6400 TDZE 81 Apt Elev 82
---	------------------------	---

LOC RWY 19
DILLINGHAM (DLG)(PADL)

⚠ Inop table does not apply to S-LOC 19 Cats A/B. Inop table does not apply to when using Manokotak altimeter setting. For inop ALS, increase S-LOC 19 Cat C/D visibility to 1 $\frac{3}{8}$. Circling NA east of Rwy 1-19. Helicopter visibility reduction below $\frac{3}{4}$ SM NA. DME required. VDP NA with Manokotak altimeter setting. When local altimeter not received, use Manokotak altimeter setting and increase all MDA 40 feet; increase S-LOC 19 Cats C/D visibility $\frac{1}{8}$ SM and Circling Cat C visibility $\frac{1}{4}$ SM.

ODALS MISSED APPROACH: Climb to 4200 direct DLG VOR/DME and hold, continue climb-in-hold to 4200.

AFIS ★ 125.0	ANCHORAGE CENTER 132.75 282.35	DILLINGHAM RADIO 123.6 (CTAF)
-------------------------------	--	---



CATEGORY	A	B	C	D
S-19	560-1 479 (500-1)		560-1 $\frac{1}{4}$ 479 (500-1 $\frac{1}{4}$)	
C CIRCLING	600-1 518 (600-1)		700-1 $\frac{1}{2}$ 618 (700-1 $\frac{1}{2}$)	780-2 $\frac{1}{4}$ 698 (700-2 $\frac{1}{4}$)

AK, 25 FEB 2021 to 22 APR 2021

AK, 25 FEB 2021 to 22 APR 2021