

APP CRS	Rwy Idg	6400
192°	TDZE	81
	Apt Elev	82

RNAV (GPS) RWY 19

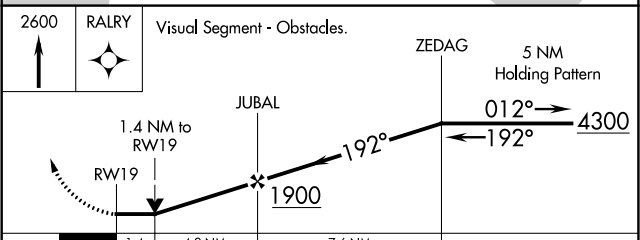
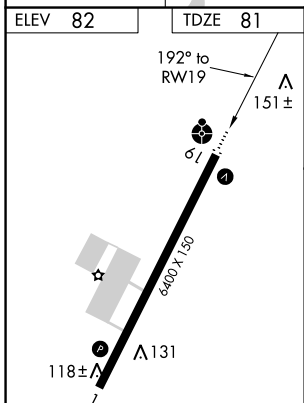
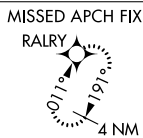
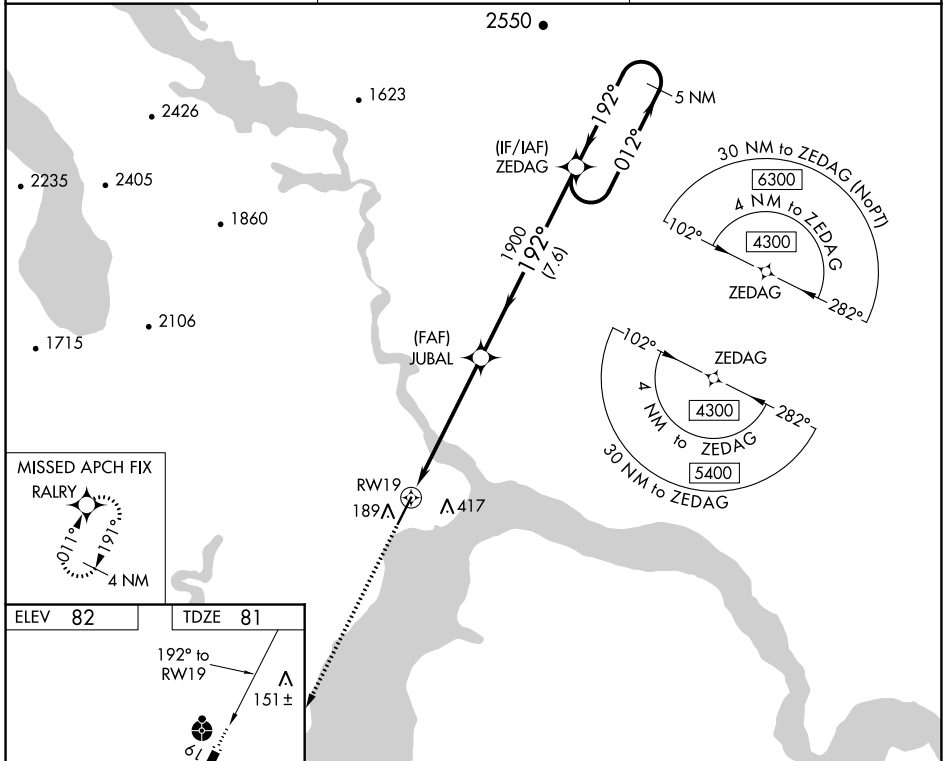
DILLINGHAM (DLG)(PADL)

⚠ Inop table does not apply to Cats A/B. Inop table does not apply when using Manokotok altimeter setting. Circling NA east of Rwy 1-19. Rwy 19 helicopter visibility reduction below ¼ SM NA. DME/DME RNP-0.3 NA. VDP NA when using Manokotok altimeter setting. When local altimeter setting not received, use Manokotok altimeter setting and increase all MDA 40 feet and increase LNAV Cat C/D visibility ½ SM. For inop ALS, increase LNAV Cat C/D visibility to 1 ⅜ mile.



MISSED APPROACH:
Climb to 2600 direct RALRY and hold.

AFIS * 125.0	ANCHORAGE CENTER 132.75 282.35	DILLINGHAM RADIO 123.6 (CTAF) ①
-------------------------------	---	--



CATEGORY	A	B	C	D
LNAV MDA	560-1	479 (500-1)	560-1¼	479 (500-1¼)
☑ CIRCLING	600-1	518 (600-1)	700-1¾ 618 (700-1¾)	780-2¼ 698 (700-2¼)

AK, 25 FEB 2021 to 22 APR 2021

AK, 25 FEB 2021 to 22 APR 2021