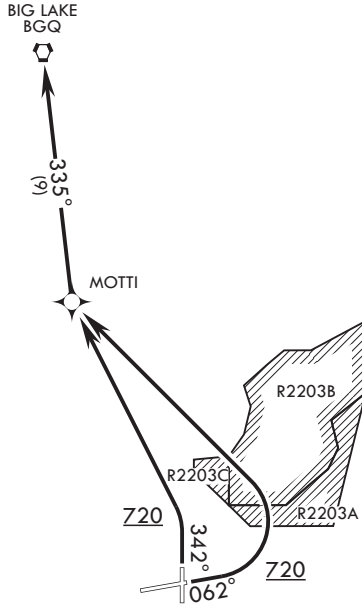


# ELMENDORF TWO DEPARTURE (RNAV) (MOTTI2.BGQ)

ANCHORAGE, ALASKA

ATIS \* 124.3 273.5  
 CLNC DEL 128.8 306.925  
 GND CON 121.8 275.8  
 TOWER 127.2 352.05  
 ANCHORAGE APP CON/DEP CON  
 118.6 290.5



Rwy 6-34 not authorized  
if R-2203 active.

**RADAR  
REQUIRED**

**GPS and  
RNAV1  
REQUIRED**

(For non-GPS  
equipped aircraft)



### DEPARTURE ROUTE DESCRIPTION

TAKE-OFF RWY 6: Climb heading 062° to 720, then turn left direct MOTTI, thence via 335° track to BGQ VORTAC at assigned altitude.

TAKE-OFF RWY 34: Climb heading 342° to 720, then turn left direct MOTTI, thence via 335° track to BGQ VORTAC at assigned altitude.

# ELMENDORF TWO DEPARTURE (RNAV) (MOTTI2.BGQ)

ANCHORAGE, ALASKA  
ELMENDORF AFB (PAED)

Orig 19JUL18

AK, 25 FEB 2021 to 22 APR 2021

AK, 25 FEB 2021 to 22 APR 2021