

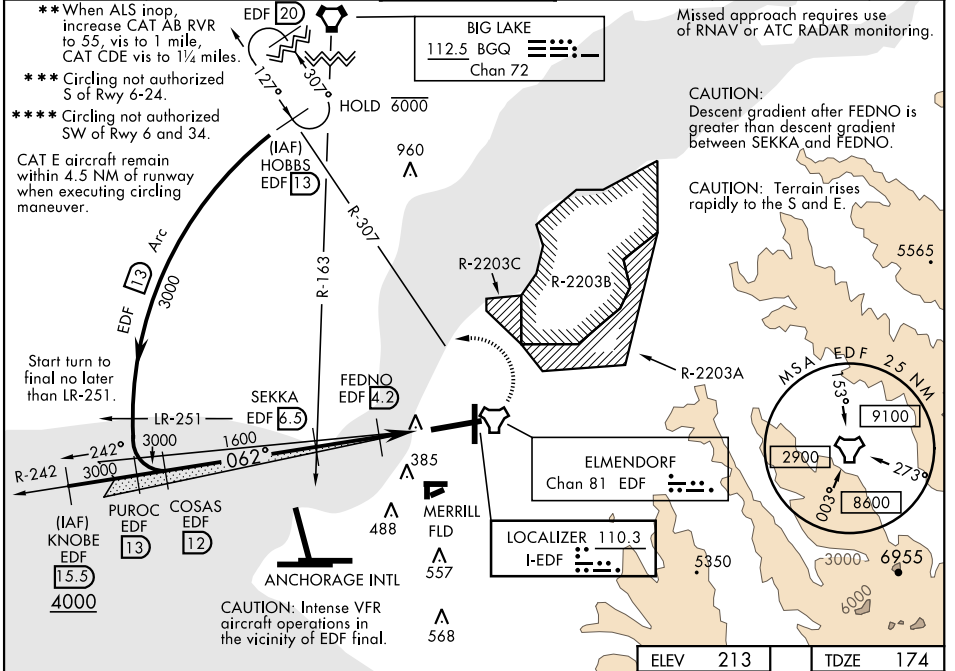
LOC I-EDF 110.3	APCH CRS 062°	Rwy Idg 10,000 TDZE 174 Arprt Elev 213
---------------------------	-------------------------	---

AL-1196 [USAF]

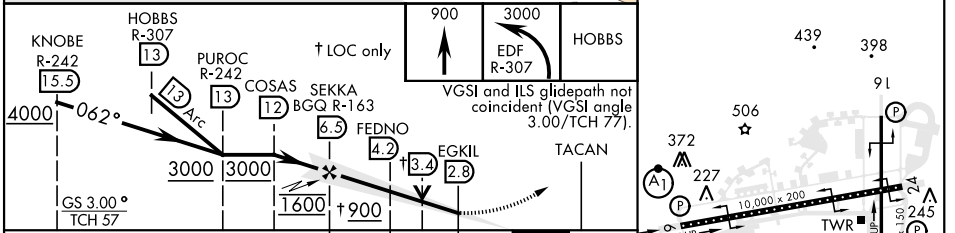
ELMENDORF AFB (PAED)

<p>▼ * When TDZ/CL light inop increase RVR to 24. When ALS inop, increase RVR to 40, vis to ¾ mile.</p>	<p>ALSIF-1 A1</p>	<p>MISSED APPROACH: Climb to 900, then climbing left turn to 3000 via EDF R-307 to HOBBS and hold.</p>
---	-----------------------	--

<p>ATIS ★ 124.3 273.5</p>	<p>ANCHORAGE APP CON 118.6 290.5 North 123.8 259.3 South</p>	<p>TOWER 127.2 352.05</p>	<p>GND CON 121.8 275.8</p>	<p>CLNC DEL 128.8 306.925</p>	<p>PAR</p>
--------------------------------------	--	--------------------------------------	---------------------------------------	--	------------



EMERG SAFE ALT 100 NM 15,300	ELEV 213	TDZE 174
------------------------------	----------	----------



CATEGORY	A	B	C	D	E
S-ILS 6*	374/18		200	(200-½)	
S-LOC 6**	620/24	426 (400-½)	620/40	426	(400-¾)
CIRCLING ***	800-1	587 (600-1)	800-1½ 587 (600-1½)	800-2 607 (700-2)	940-2½ 727 (800-2½)
RWY 34 CIRCLING MINIMUMS					
CIRCLING ****	800-1	587 (600-1)	920-2 707 (800-2)	1020-2½ 807 (900-2½)	1480-3 1267 (1300-3)

HIRL all rwys
REIL Rwy 16
TDZL/CL Rwy 6

AK, 25 FEB 2021 to 22 APR 2021

AK, 25 FEB 2021 to 22 APR 2021