

ANCHORAGE, ALASKA

RNAV (GPS) RWY 6

APCH CRS	Rwy Idg	10,000
062°	TDZE	175
	Arprt Elev	213

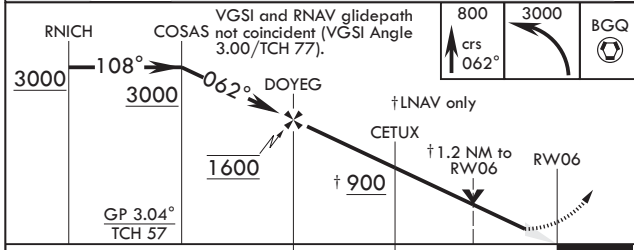
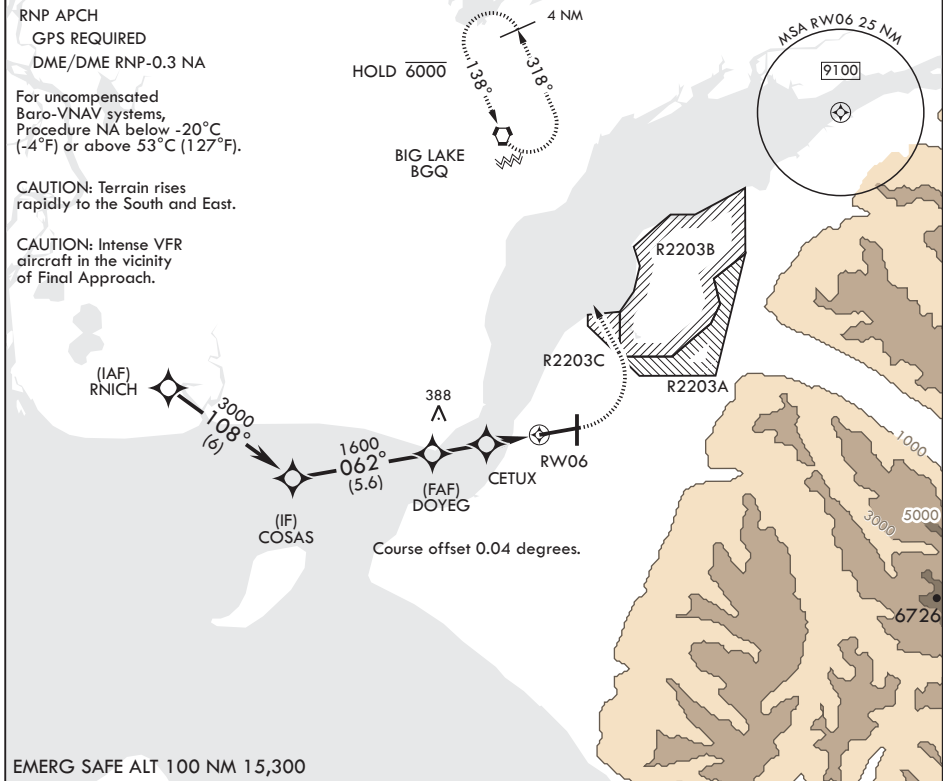
AL-1196 (USAF)

ELMENDORF AFB (PAED)

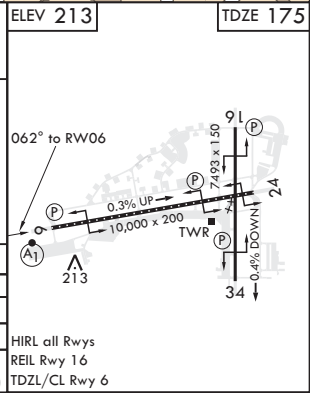
▼ * When ALS inop increase RVR to 60, vis to 1 1/8 miles.
 ** When ALS inop increase CAT AB RVR to 55, vis to 1 mile, CAT CD vis to 1 3/8 miles.
 *** Circling NA SW of Rwy 6 and 34.

ALSF-1 MISSED APPROACH: Climb to 800 then climbing left turn to 3000 direct BGQ and hold.

ATIS*	ANCHORAGE APP CON/DEP CON	TOWER	GND CON	CLNC DEL	PAR
124.3 273.5	118.6 290.5	127.2 352.05	121.8 275.8	128.8 306.925	



CATEGORY	A	B	C	D
LNAV/VNAV DA*	560/35	386	400-5%	
LNAV MDA**	640/24 466 (500-1/2)	640/50 466 (500-1)		
CIRCLING***	800-1 587 (600-1)	920-2 707 (800-2)	1020-2 1/2 807 (900-2 1/2)	



ANCHORAGE, ALASKA
 Amdt 2 05NOV20

61°15'N - 149°48'W

ELMENDORF AFB (PAED)

RNAV (GPS) RWY 6

AK, 25 FEB 2021 to 22 APR 2021

AK, 25 FEB 2021 to 22 APR 2021